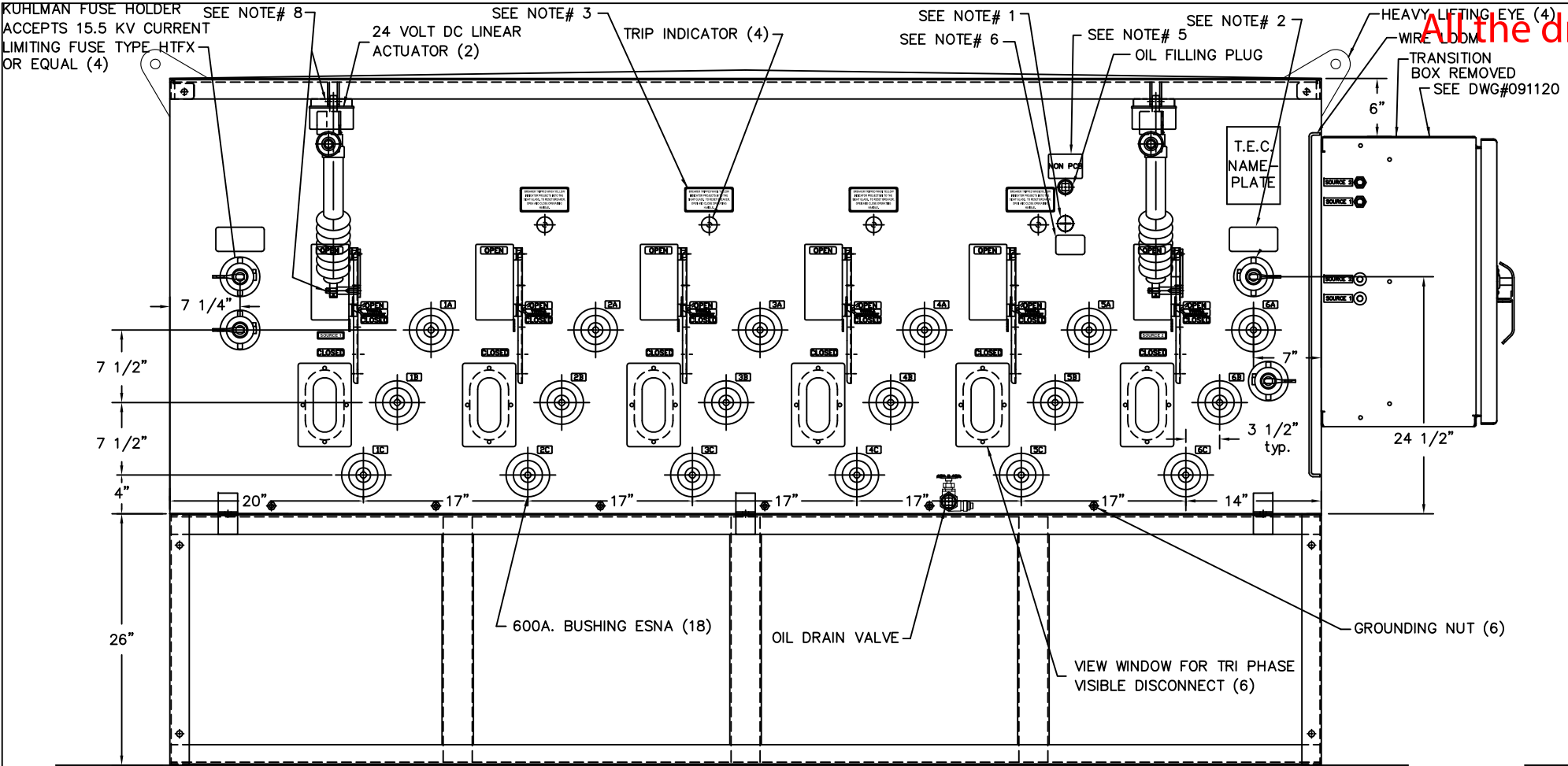
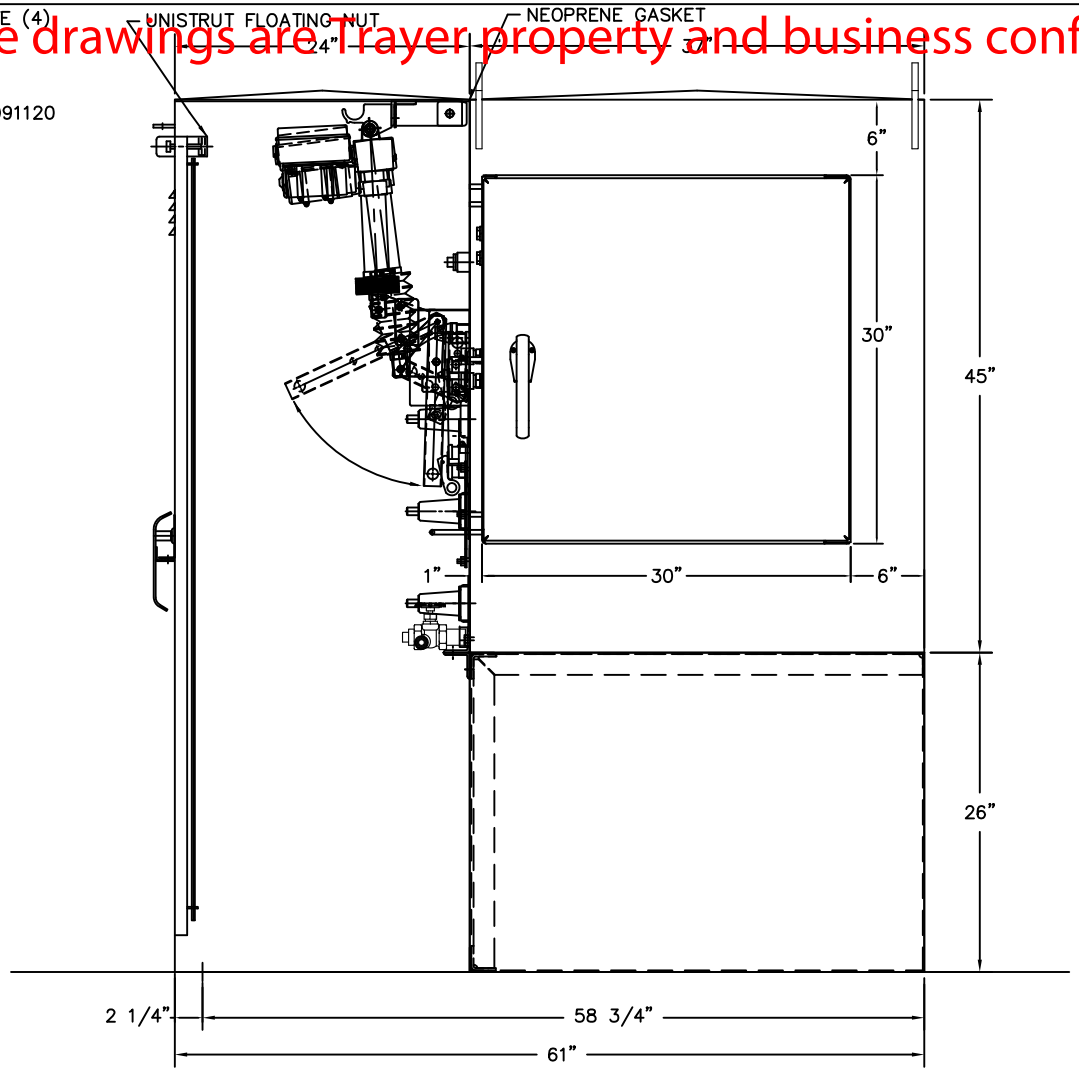


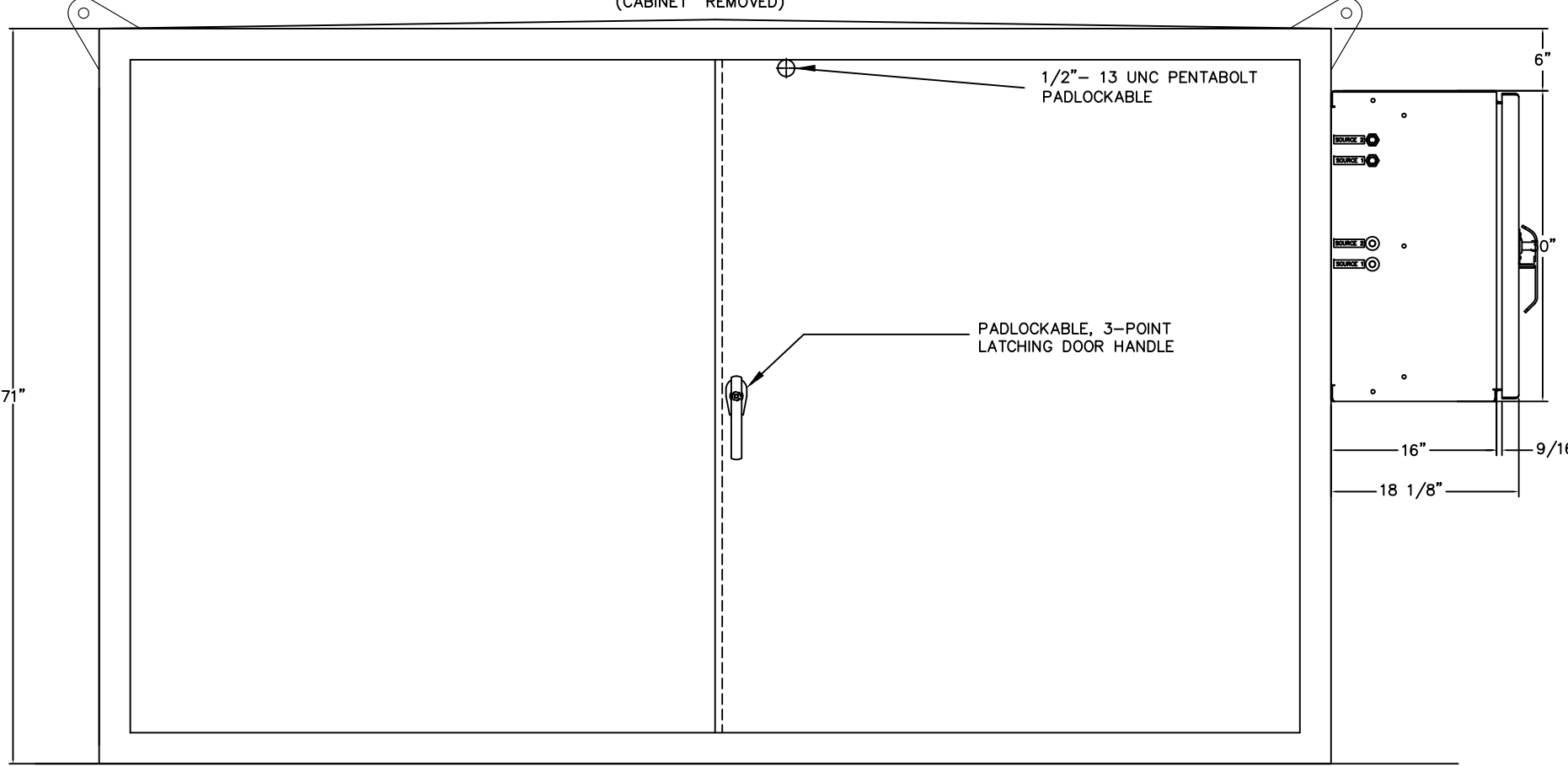
All the drawings are Trayer property and business confidential.



FRONT VIEW
(CABINET REMOVED)

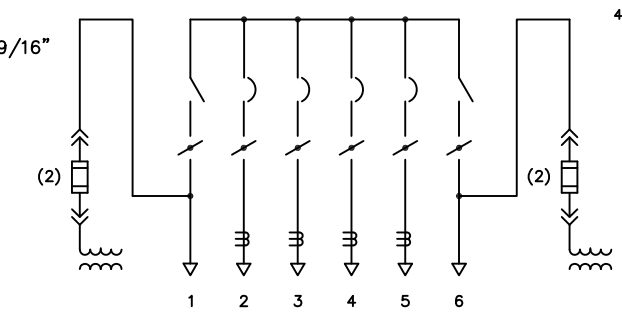


SIDE VIEW
(CABINET SIDE REMOVED)



FRONT VIEW

- NOTES:
- 1- THE TRAYER CAT.# 901A LIQUID LEVEL GAUGE IS A COMPLETELY STATIC DEVICE THAT ACTUALLY READS "LOW OIL" IF THE OIL DROPS BELOW PROPER LEVEL. IT IS AVAILABLE TO ALL SWITCH AND TRANSFORMER MANUFACTURERS IN ORDER TO PROMOTE INDUSTRY STANDARDIZATION.
 - 2- DECAL READS: "WARNING - POTENTIAL TRANSFORMER FUSE ENERGIZED FROM SWITCHGEAR BUS. TO CHANGE FUSE FIRST DE-ENERGIZE BUS."
 - 3- DECAL READS: "BREAKER TRIPPED WHEN YELLOW INDICATOR PROJECTS IN TO THE SIGHT GLASS. TO RESET BREAKER, OPEN AND CLOSE OPERATING HANDLE"
 - 4- MATERIAL:
OIL TANK : 7 GA. STAINLESS STEEL
CABINET & BASE : 11 GA. STAINLESS STEEL
 - 5- DECAL READS: FILLED WITH NON PCB MINERAL OIL [LESS THAN 1 PPM] AT TIME OF MANUFACTURE
 - 6- DECAL READS: LIQUID LEVEL INDICATOR READS "LOW OIL" WHEN OIL IS LOW.
 - 7- WEIGHT OF UNIT : 7675 LB.
 - 8- RETAINER CABLE ON HITCH PIN



ONE LINE DIAGRAM

KV NOMINAL 15 KV
KV BIL PHASE TO PHASE 95 KV
KV BIL PHASE TO GROUND 95 KV
ACROSS OPEN CONTACTS 95 KV

TOLERANCES ± 1/8"

TRAYER S.O.		TRAYER ENGINEERING CORPORATION	
FINISH: DARK GREEN	MATL: SEE NOTE# 4	898 PENNSYLVANIA AVENUE SAN FRANCISCO, CALIFORNIA 94107 (415) 285-7770	
SCALE: 1/8" = 1"	DR. BY: S. I. DAZA	TRAYER 15 KV PADMOUNTED LIQUID INSULATED VACUUM SWITCHGEAR ASSEMBLY	
CK. BY: BQB	APPVD: BQB	CAT.#3800C82VD6M1-211(2) ATO	
DATE: 11-19-09	UNIT TYPE: PADMOUNT	DRAWING NUMBER: 091119	REVISION: C
			03-01-10