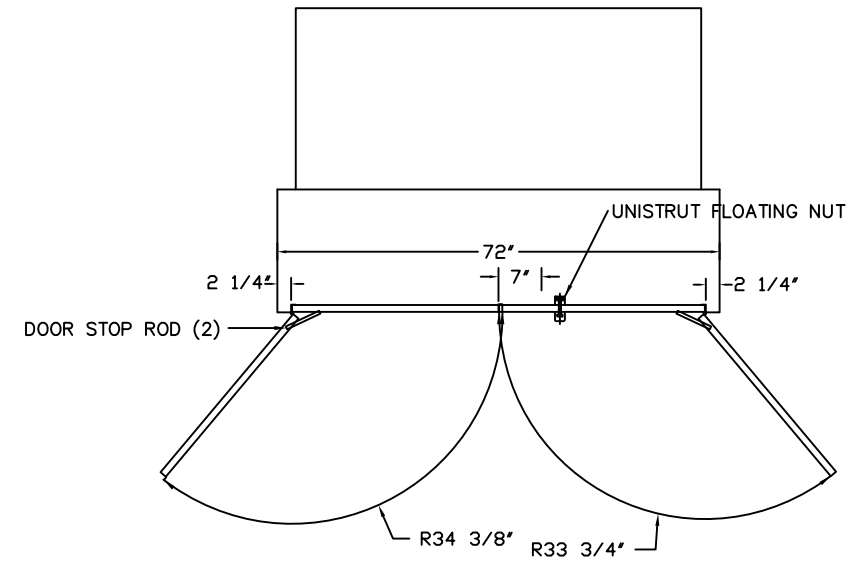
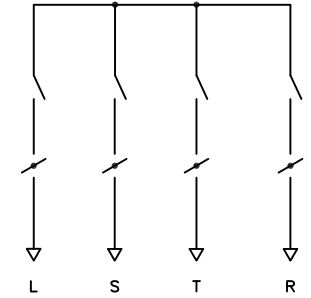


FRONT VIEW



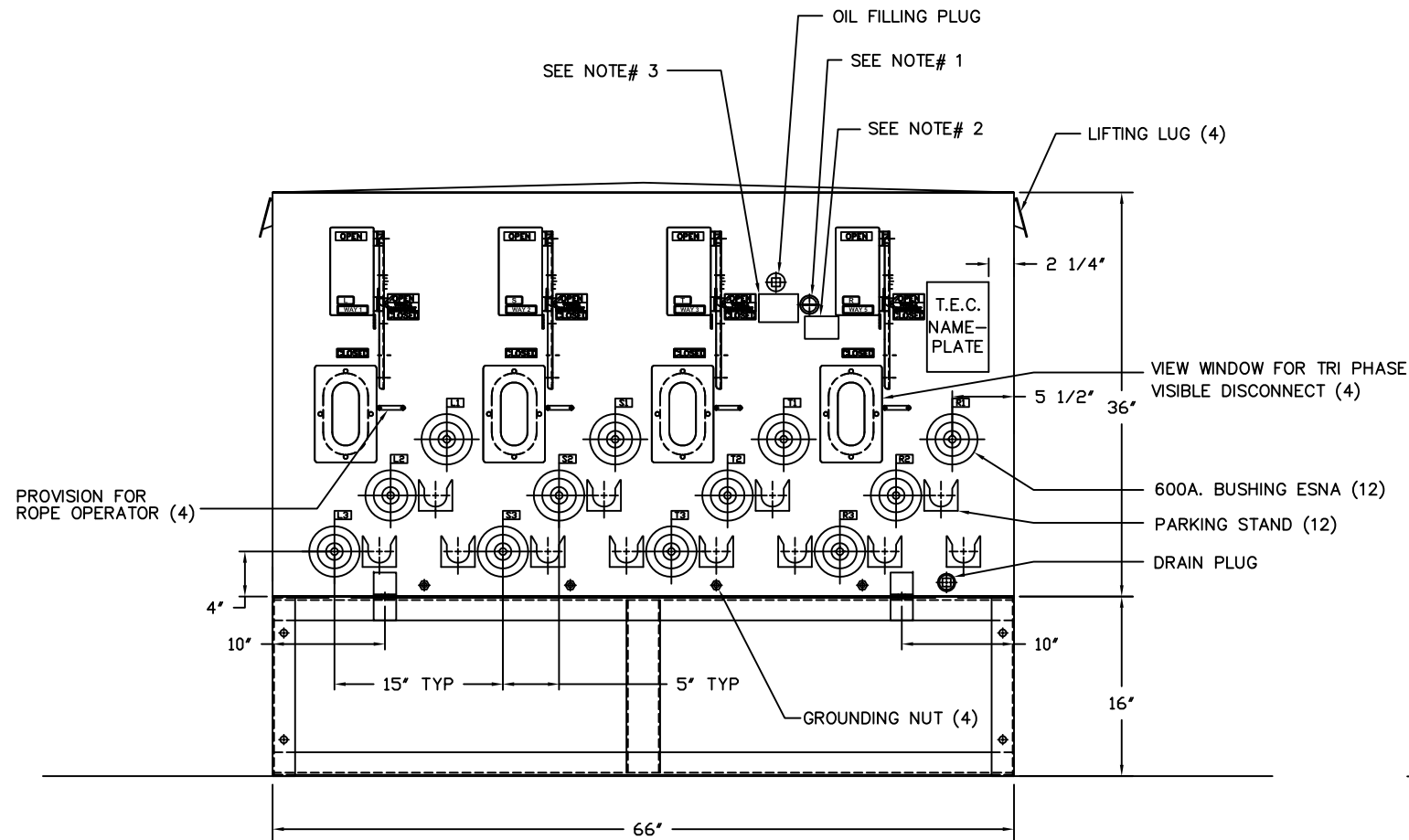
DOORS OPEN AND STOP AT 130°
DOOR SWING DETAIL

SCALE : 1/16" = 1"

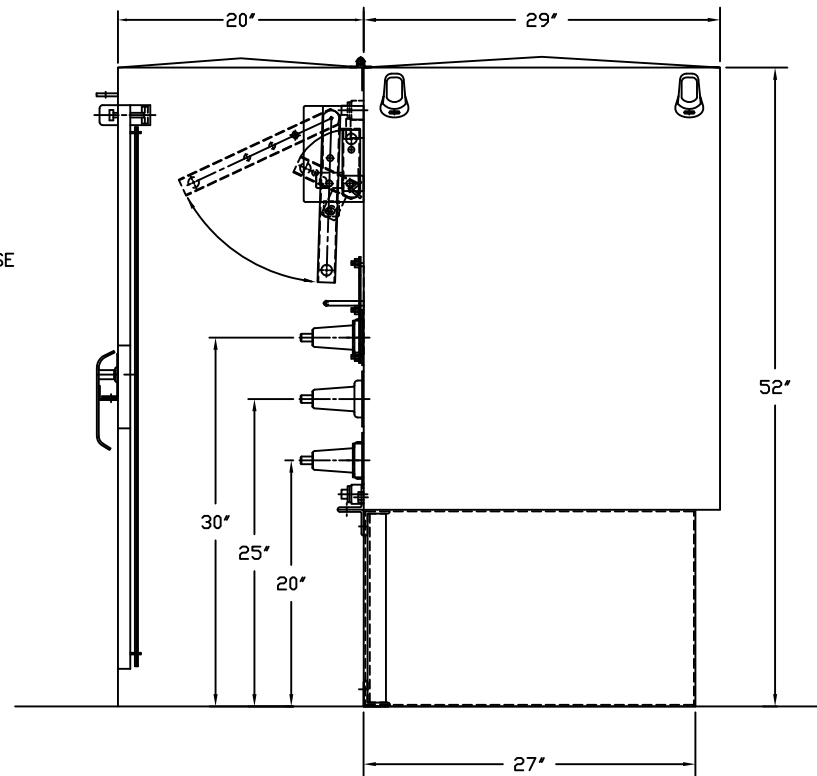


ONE LINE DIAGRAM

KV NOMINAL 25 KV
KV BIL PHASE TO PHASE 125 KV
KV BIL PHASE TO GROUND 125 KV
ACROSS OPEN CONTACTS 125 KV



FRONT VIEW
(CABINET REMOVED)



SIDE VIEW
(CABINET SIDE REMOVED)

NOTES:

- THE TRAYER CAT. 901A LIQUID LEVEL GAUGE IS REMOVABLE FROM THE COMBINATION OIL FILLING - OIL DRAIN - OIL SAMPLING - PORT WHEN THE STAINLESS STEEL METER SEAL IS CUT. THIS IS A COMPLETELY STATIC DEVICE THAT ACTUALLY READS "LOW OIL" IF THE OIL DROPS BELOW PROPER LEVEL. IT IS AVAILABLE TO ALL SWITCH AND TRANSFORMER MANUFACTURERS IN ORDER TO PROMOTE INDUSTRY STANDARDIZATION.
- DECAL READS:
LIQUID LEVEL INDICATOR READS "LOW OIL" WHEN OIL IS LOW.
- DECAL READS:
FILLED WITH NON PCB MINERAL OIL [LESS THAN 1 PPM] AT TIME OF MANUFACTURE
- MATERIAL:
OIL TANK : 7 GA. STAINLESS STEEL
BASE : 11 GA. STAINLESS STEEL
CABINET: 11GA STAINLESS STEEL
- WEIGHT OF UNIT : 2925 LB.

TRAYER S.O.

FINISH	DARK GREEN	TRAYER ENGINEERING CORPORATION
MATL	SEE NOTE# 4	898 PENNSYLVANIA AVENUE SAN FRANCISCO, CALIFORNIA 94107 (415) 285-7770
SCALE	1/8" = 1"	TRAYER 25 KV PADMOUNTED LIQUID INSULATED VACUUM SWITCHGEAR ASSEMBLY CAT.#810C10VD4M33WXY
DR. BY	R. KOWDLEY	DRAWING NUMBER
CK. BY	BAB	060217
APPVD.	BAB	REVISION
DATE	03-02-06	E
UNIT TYPE	PADMOUNT	05-26-09

TOLERANCES ± 1/8"