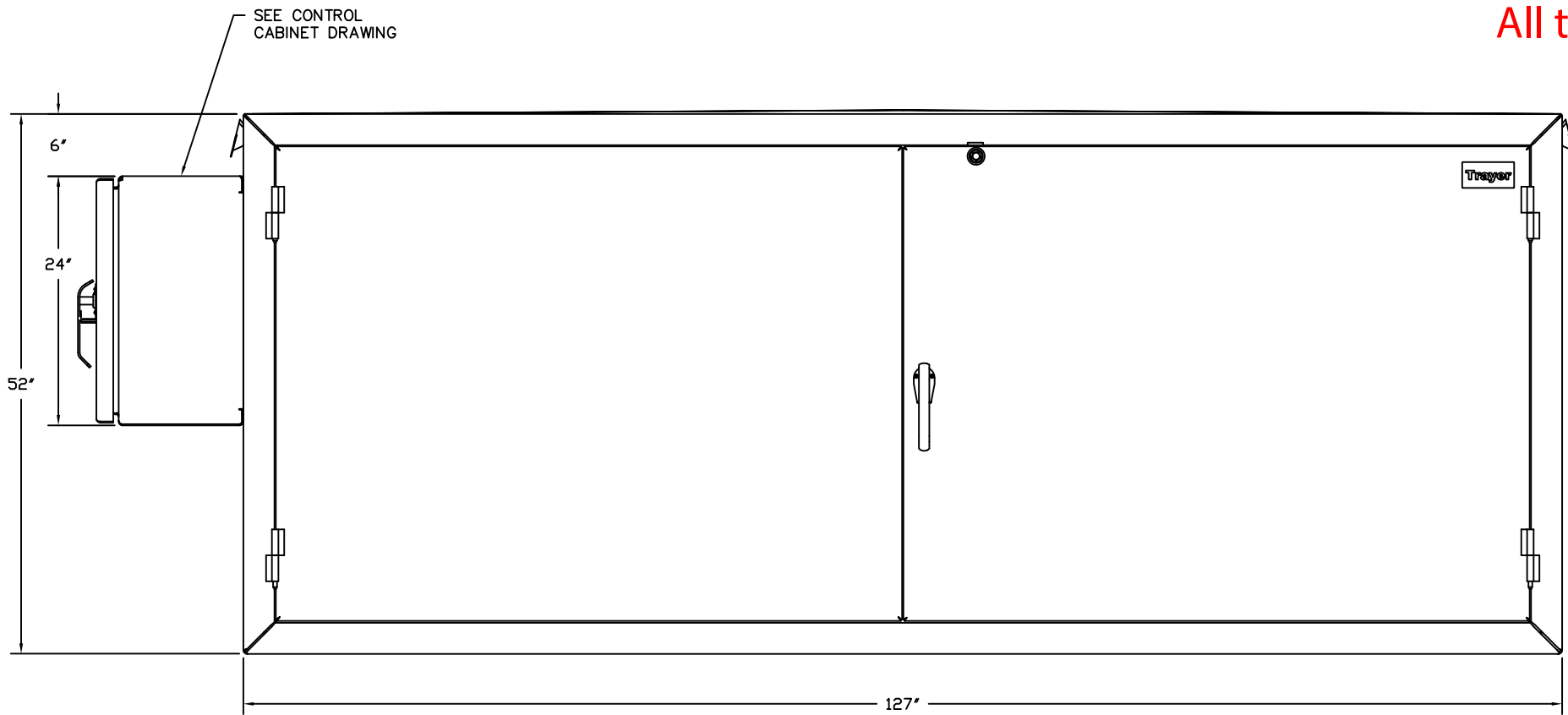
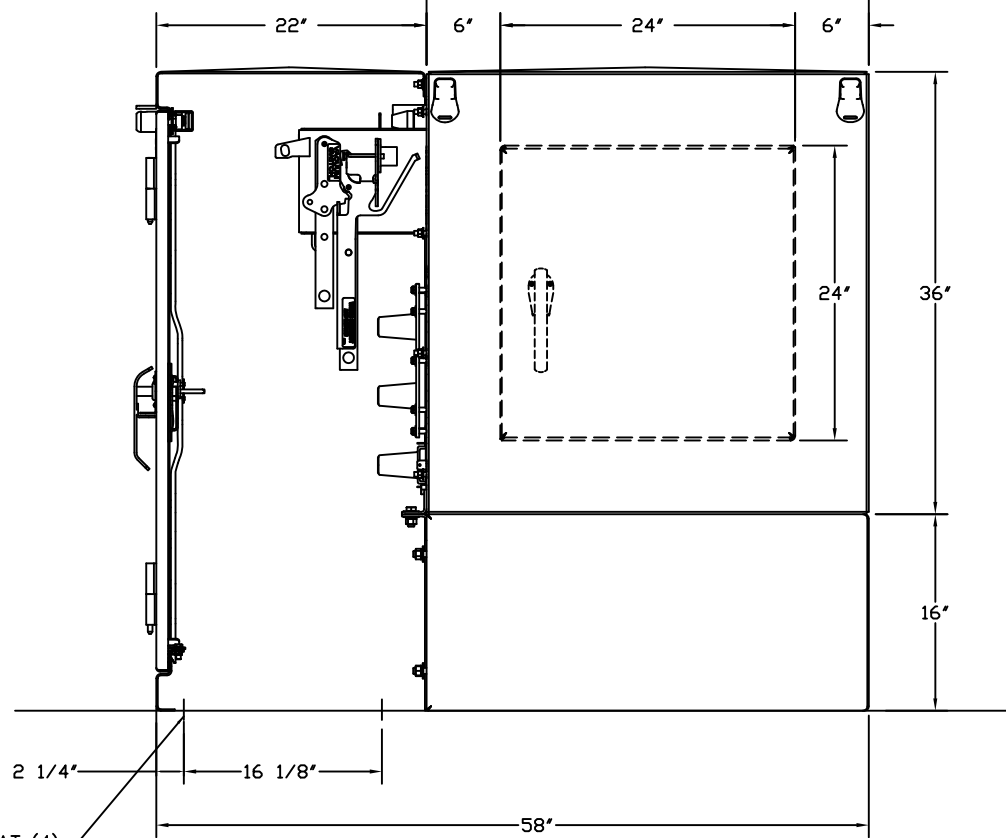


All the drawings are Trayer property and business confidential.

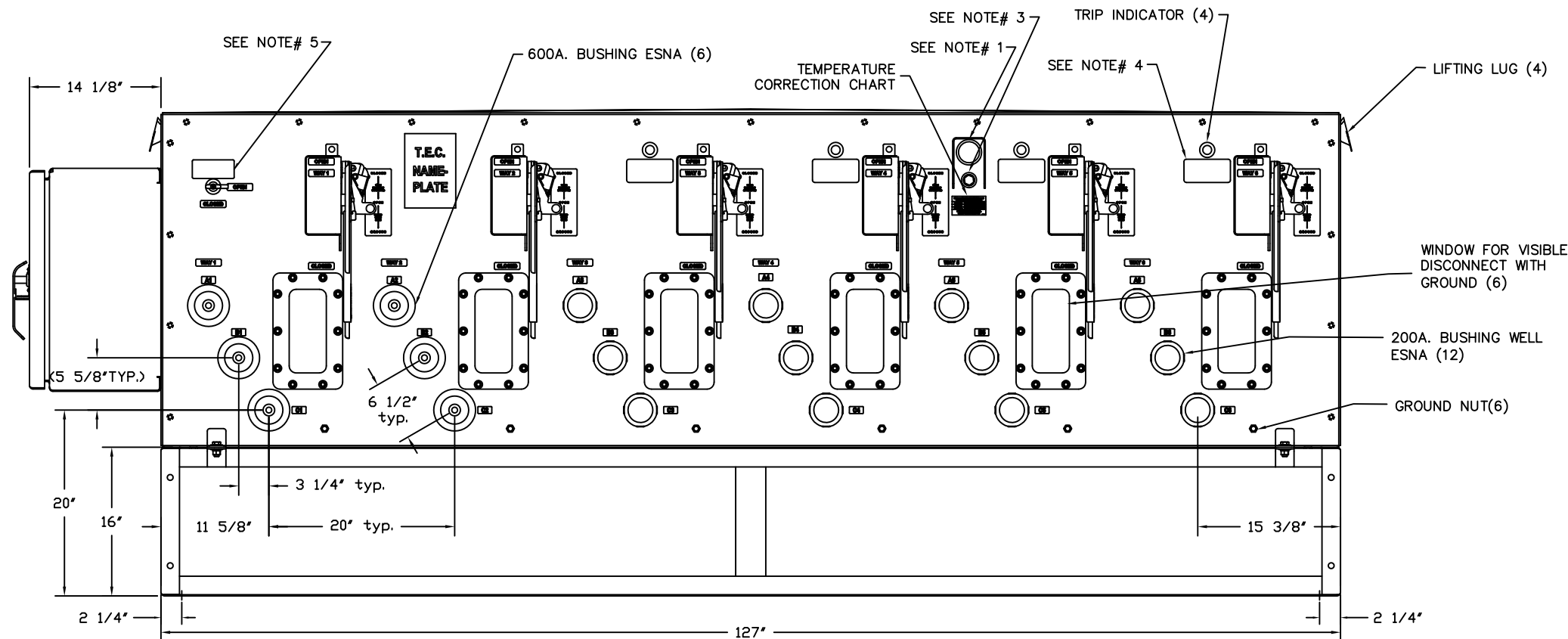


FRONT VIEW



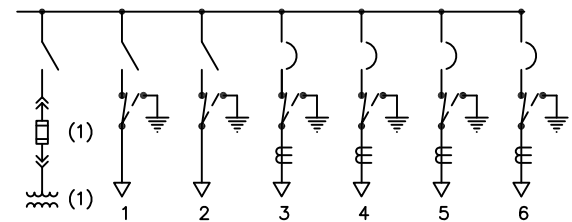
SIDE VIEW

(CABINET SIDE REMOVED)



FRONT VIEW

(CABINET FRONT AND DOORS REMOVED)



ONE LINE DIAGRAM

- NOTES:
- 1- 0 TO 15 PSIG PRESSURE GAUGE. SEE CHART FOR TEMPERATURE CORRECTION.
 - 2- MATERIAL:
TANK : 7 GA. STAINLESS STEEL
BASE & CABINET : 11 GA. STAINLESS STEEL
 - 3- THIS PORT CONTAINS A DILO VALVE WHEN UNIT IS SF6 INSULATED.
 - 4- DECAL READS:
"BREAKER TRIPPED WHEN YELLOW INDICATOR PROJECTS IN TO THE SIGHT GLASS. TO RESET BREAKER, OPEN AND CLOSE OPERATING HANDLE"
 - 5- DECAL READS:
"POTENTIAL TRANSFORMER DISCONNECT SWITCH MUST BE IN OPEN POSITION WHEN DOING HIGH POTENTIAL TESTING."
 - 6- UNIT WEIGHT: 2765 LBS.

TRAYER S.O.

CATALOG LETTER INSERT	BUSHING AMPERE						FINISH DK. GREEN ENAMEL MATERIAL SEE NOTE# 2
	1	2	3	4	5	6	
A	200	200	200	200	200	200	SCALE 1/8" = 1"
B	600	600	200	200	200	200	DR. BY F. LESPADE
C	600	600	600	600	600	600	CK. BY BJB
D	600	200	200	200	200	200	APPVD. BJB
E	600	600	200	200	200	600	DATE 12-08-08
F	600	600	200	600	600	600	UNIT TYPE PADMOUNT

TOLERANCES ± 1/8"

TRAYER ENGINEERING CORPORATION
898 PENNSYLVANIA AVENUE
SAN FRANCISCO, CALIFORNIA 94107
(415) 285-7770

TRAYER SINGLE SIDE ACCESS
15 KV SF6 INSULATED PADMOUNTED
VACUUM SWITCHGEAR
CAT.#G3800__B2VDG6M1WY

DRAWING NUMBER
081119

REVISION
A