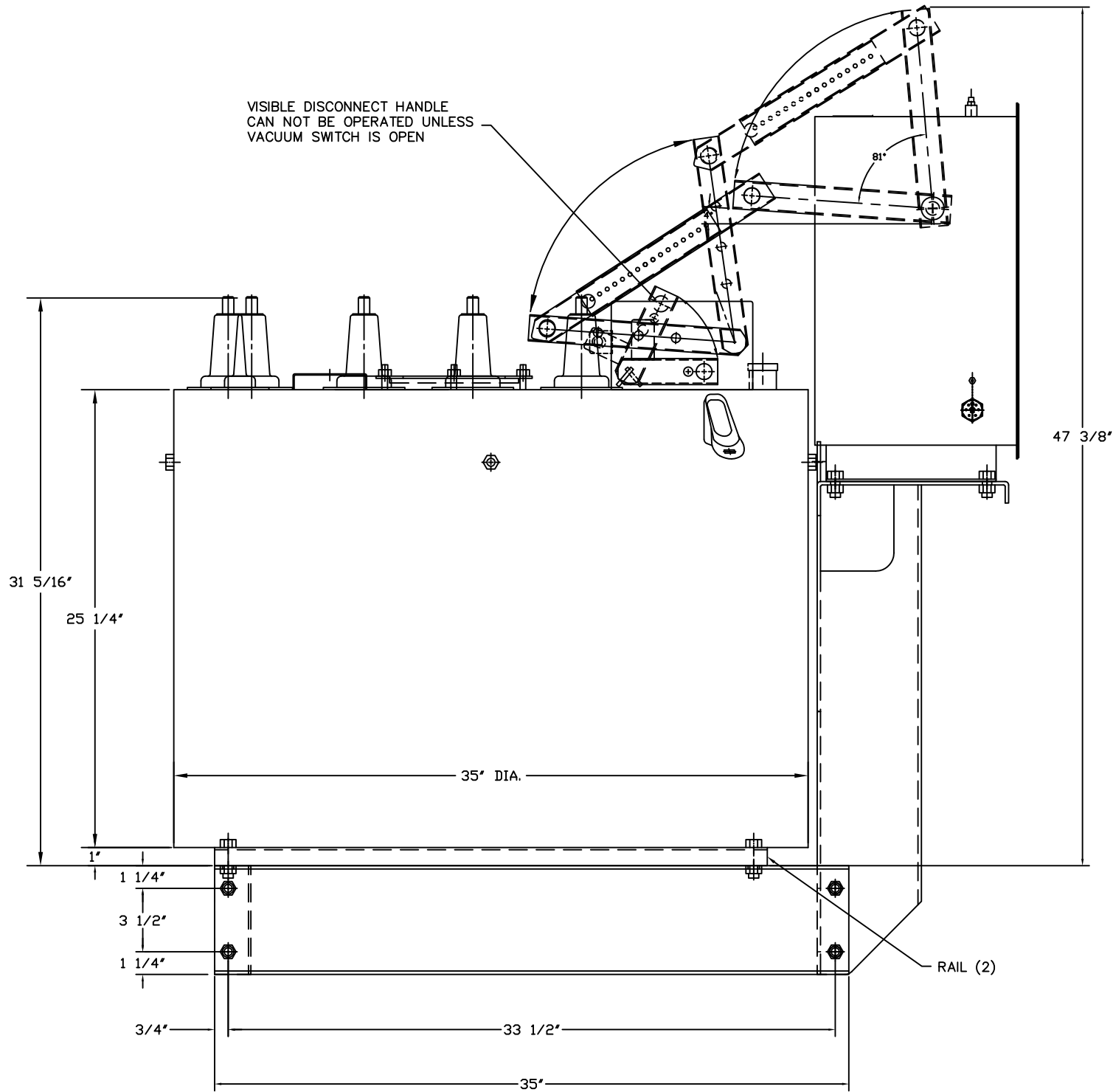
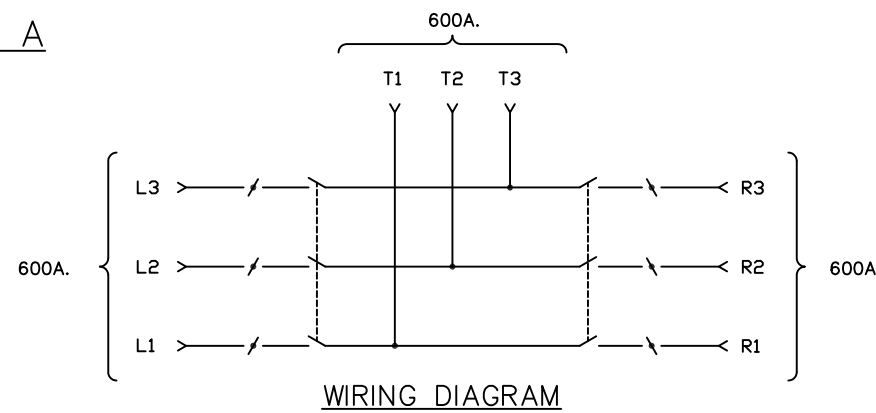


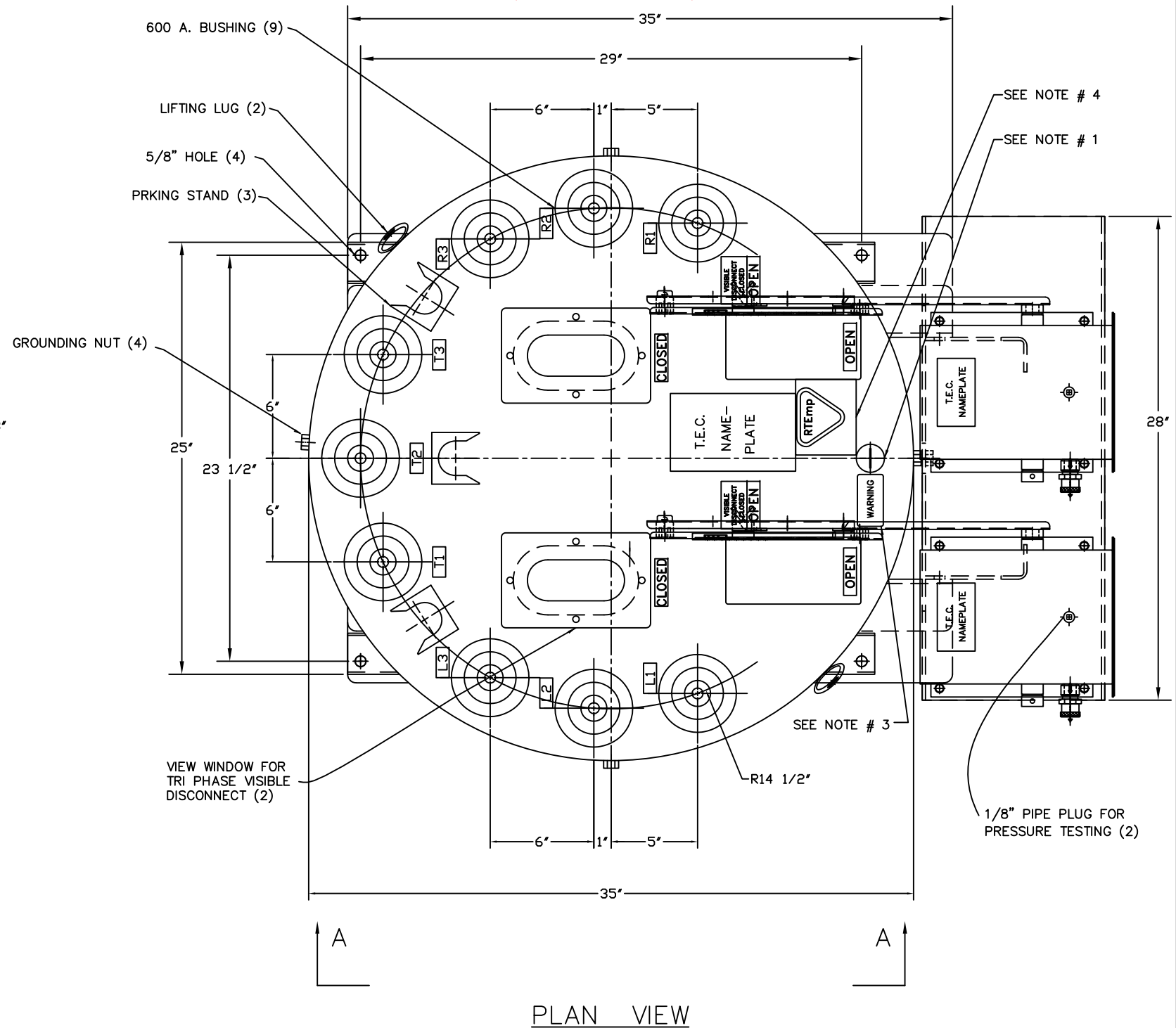
All the drawings are Trayer property and business confidential.



VIEW A - A



WIRING DIAGRAM



PLAN VIEW

NOTES:

1- THE TRAYER CAT. 901A LIQUID LEVEL GAUGE IS REMOVABLE FROM THE COMBINATION OIL FILLING - OIL DRAIN - OIL SAMPLING - PORT WHEN THE STAINLESS STEEL METER SEAL IS CUT. THIS IS A COMPLETELY STATIC DEVICE THAT ACTUALLY READS "LOW OIL" IF THE OIL DROPS BELOW PROPER LEVEL. IT IS AVAILABLE TO ALL SWITCH AND TRANSFORMER MANUFACTURERS IN ORDER TO PROMOTE INDUSTRY STANDARDIZATION.

2- ALL GROUNDING NUTS TO BE 1/2-13 STAINLESS STEEL.

3- DECAL READS:

WARNING  
WHEN SWITCH SIDE MOUNTED (BUSHINGS NOT ON TOP) LIQUID LEVEL GAUGE MUST BE NEAR TOP FOR OIL TO COVER BUSHINGS.

4- THE ADDITION OF LETTER Y IN THE CATALOG NUMBER INDICATES THE UNIT IS FILLED WITH RTEMP FLUID.

TOLERANCES ± 1/8"

TRAYER S.O.

FINISH NATURAL	TRAYER ENGINEERING CORPORATION
MATL # 304 STN. STL	898 PENNSYLVANIA AVENUE SAN FRANCISCO, CALIFORNIA 94107 (415) 285-7770
SCALE 1/4" = 1"	15 KV VACUUM SWITCH WITH TRI PHASE VISIBLE DISCONNECT WITH RTemp FLUID TRAYER CAT.#102VD2CM2Y-201(2)
DR. BY S. I. DAZA	DRAWING NUMBER 040507
CK. BY BQB	REVISION B
APPVD. BQB	08-31-04
DATE 05-07-04	
UNIT TYPE SUBMERSIBLE	