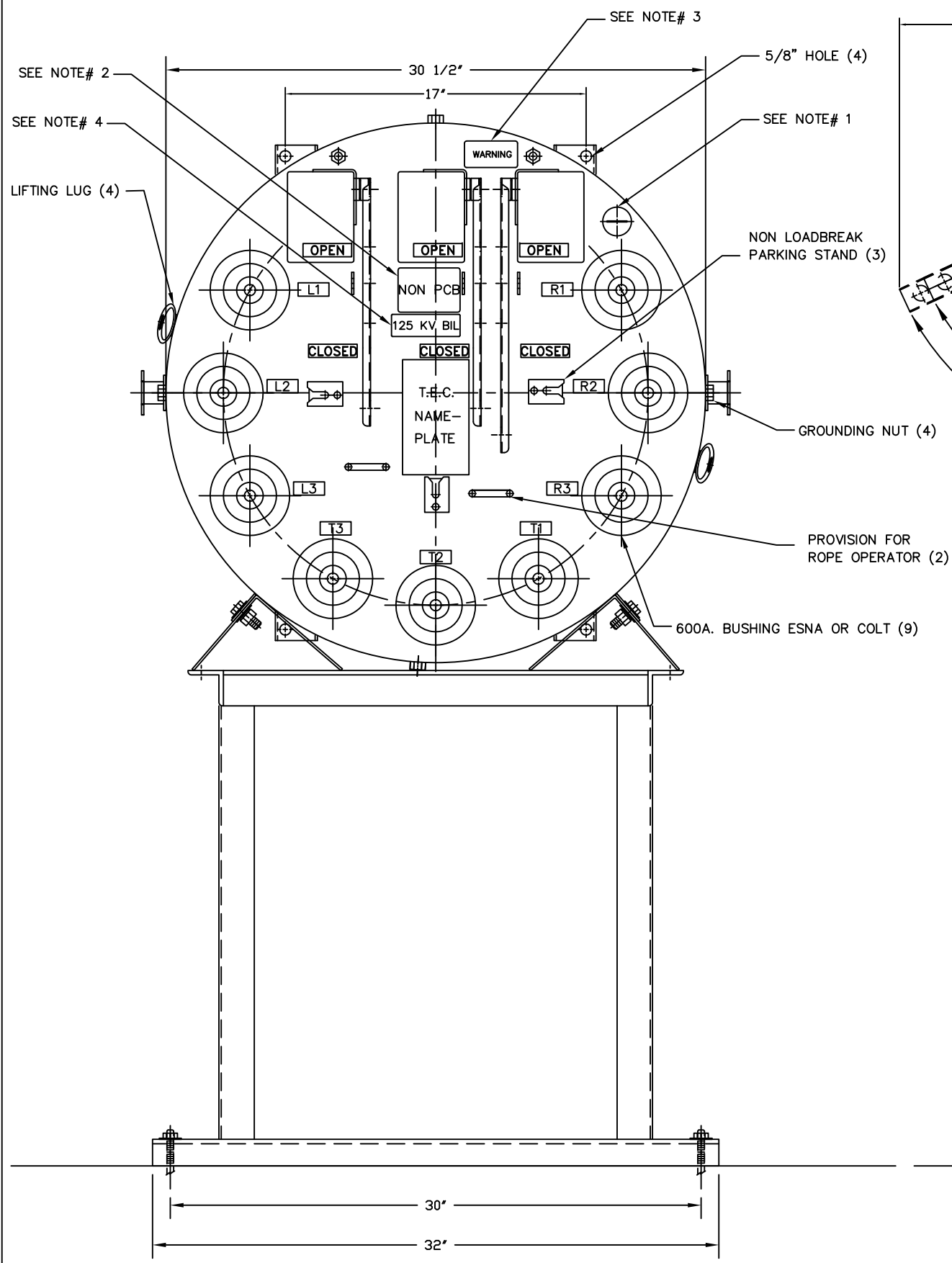
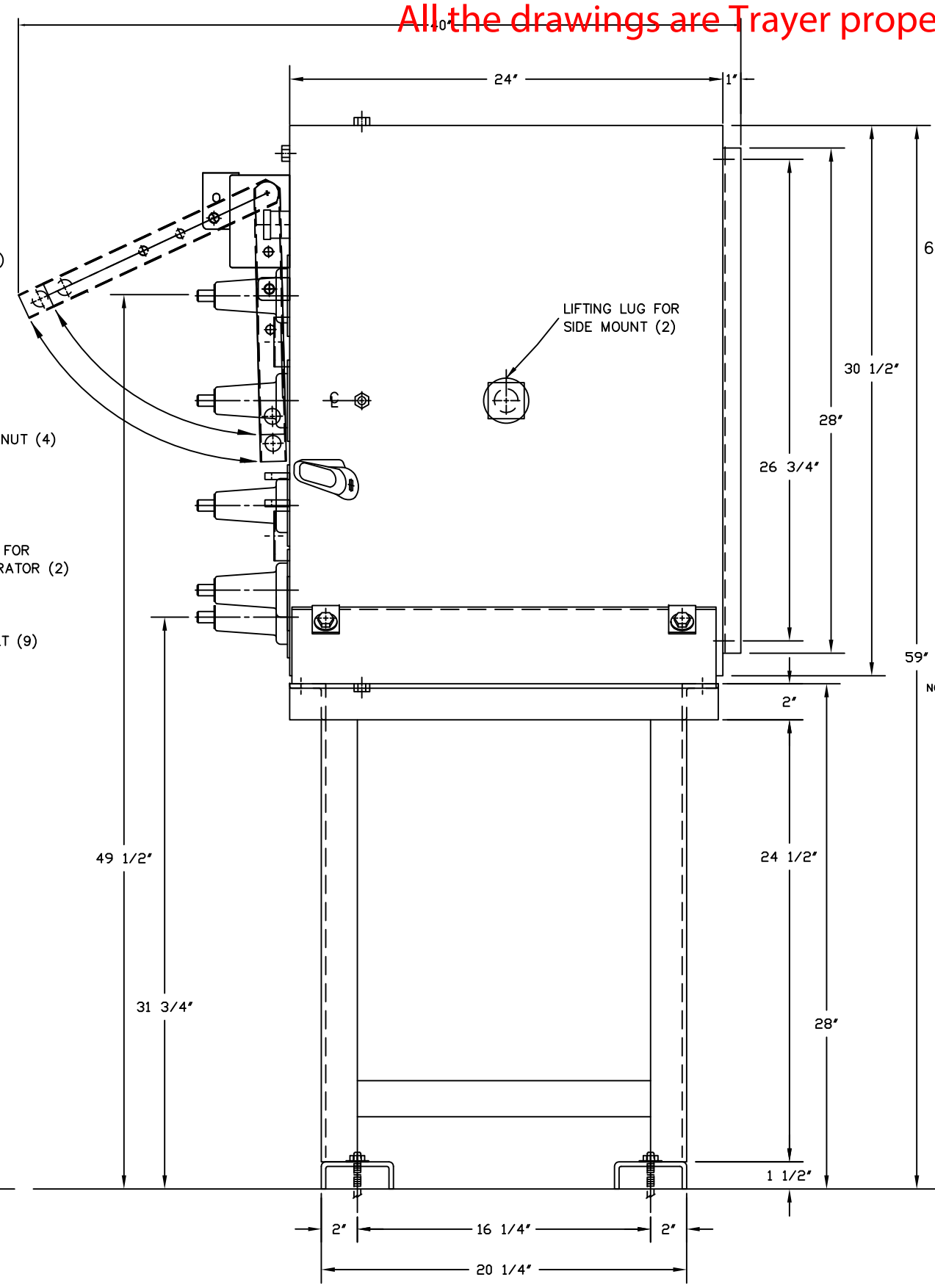


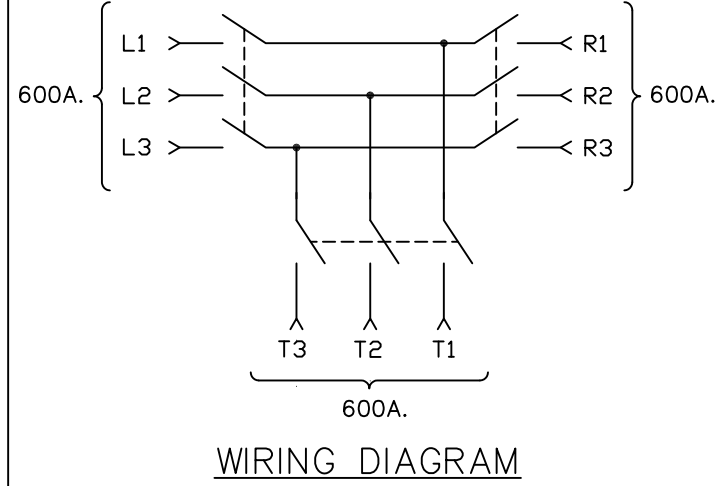
All the drawings are Trayer property and business confidential.



FRONT VIEW



SIDE VIEW



- NOTES:
- 1- THE TRAYER CAT.# 901A LIQUID LEVEL GAUGE IS A COMPLETELY STATIC DEVICE THAT ACTUALLY READS "LOW OIL" IF THE OIL DROPS BELOW PROPER LEVEL. IT IS AVAILABLE TO ALL SWITCH AND TRANSFORMER MANUFACTURERS IN ORDER TO PROMOTE INDUSTRY STANDARDIZATION.
 - 2- DECAL READS:
FILLED WITH NON PCB MINERAL OIL [LESS THAN 1 PPM] AT TIME OF MANUFACTURE
 - 3- DECAL READS:
WARNING
WHEN SWITCH SIDE MOUNTED (BUSHINGS NOT ON TOP) LIQUID LEVEL GAUGE MUST BE NEAR TOP FOR OIL TO COVER BUSHINGS.
 - 4- DECAL READS:
125 KV BIL
 - 5- WEIGHT OF SWITCH : 810 LB
WEIGHT OF STAND : 125 LB
 - 6- MATERIAL:
TANK - #304 STAINLESS STEEL
STAND - ANGLE IRON
 - 7- FINISH:
TANK - NATURAL
STAND - HOT DIP GALVANIZED AFTER FABRICATION

TOLERANCES ± 1/8"

TRAYER S.O.		TRAYER ENGINEERING CORPORATION	
FINISH SEE NOTE# 7		898 PENNSYLVANIA AVENUE	
MATL SEE NOTE# 6		SAN FRANCISCO, CALIFORNIA 94107	
SCALE 1/4" = 1"		(415) 285-7770	
DR. BY S. I. DAZA		TRAYER 25 KV CAT.#113CGM84	
CK. BY BAB		VACUUM SWITCH WITH 28" STAND	
APPVD. BAB		DRAWING NUMBER	
DATE 10-10-00		001010	
UNIT TYPE VAULT		REVISION F	
		03-02-10	