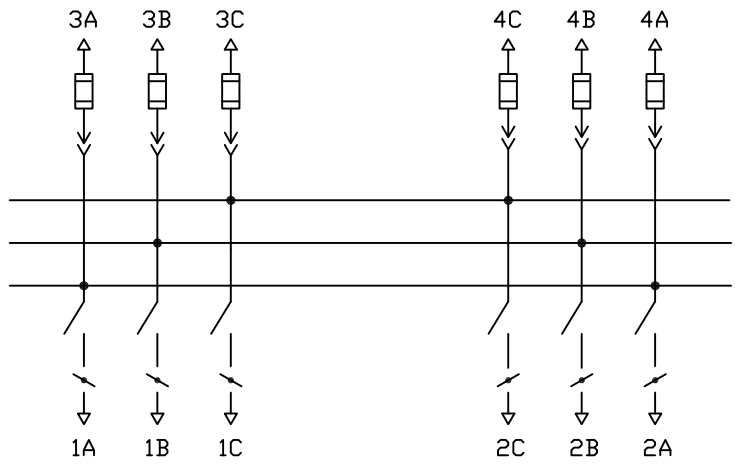
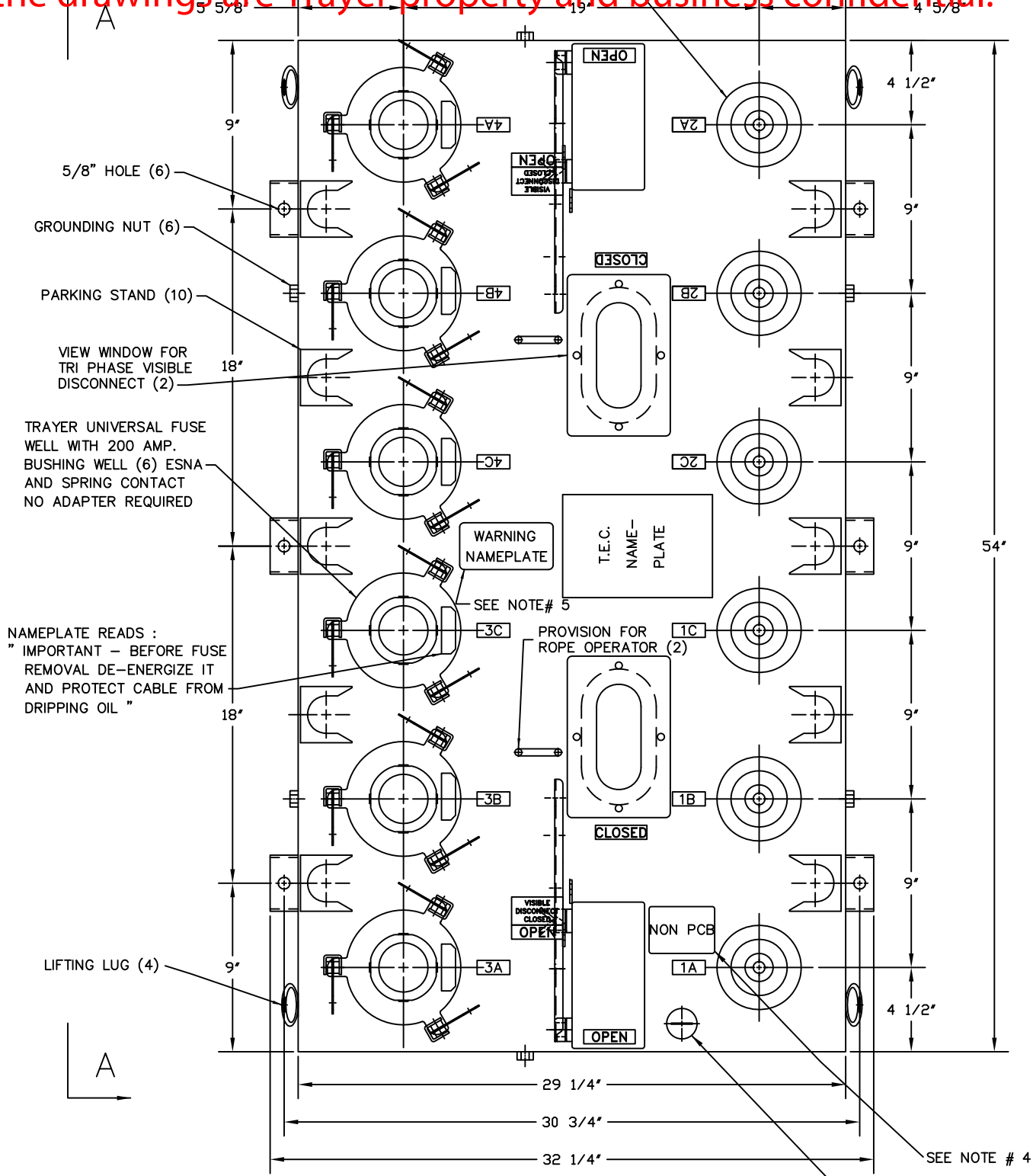


VIEW A-A



WIRING DIAGRAM



PLAN VIEW

NOTES:

- 1- THE TRAYER CAT. 901C LIQUID LEVEL GAUGE IS A COMPLETELY STATIC DEVICE THAT ACTUALLY READS "LOW OIL" IF THE OIL DROPS BELOW PROPER LEVEL. IT IS AVAILABLE TO ALL SWITCH AND TRANSFORMER MANUFACTURERS IN ORDER TO PROMOTE INDUSTRY STANDARDIZATION.
- 2- THIS EQUIPMENT IS DESIGNED TO ACCEPT _____ KV LINE TO GROUND RATED FUSES. THESE FUSES ARE SUITABLE FOR USE ON A _____ KV 3 WIRE SYSTEM GROUNDED AT SOURCE.
- 3- THE ADDITION OF LETTER **A** IN THE CATALOG NUMBER INDICATES THE UNIT IS FILLED WITH ALPHA 1 FLUID.

- 4- DECAL READS:
FILLED WITH NON PCB MINERAL OIL [LESS THAN 1 PPM] AT TIME OF MANUFACTURE
- 5- NAMEPLATE READS:
WARNING DO NOT USE EXPULSION TYPE FUSES

CATALOG NO.	NOMINAL KV	BIL Ø TO Ø & Ø TO GRD	BIL ACROSS OPEN CONTACT	APPROX. GROSS WEIGHT - LBS.
CAT.# 102S2BSF2_M3	15	125	95	2530
CAT.# 112S2BSF2_M3	25	125	125	2530

CATALOG LETTER INSERT	BUSHING AMPERE				FINISH NATURAL
	1	2	3	4	
A	200	200	200	200	MATERIAL # 304 STN. STL. SCALE 1/4" = 1" DR. BY S. I. DAZA CK. BY BJB APPVD. BJB DATE 06-16-09 UNIT TYPE SUBMERSIBLE
B	600	600	200	200	
D	600	200	200	200	

TOLERANCES ± 1/8"

TRAYER S.O.

TRAYER ENGINEERING CORPORATION
898 PENNSYLVANIA AVENUE
SAN FRANCISCO, CALIFORNIA 94107
(415) 285-7770

4 WAY SUBMERSIBLE VACUUM SWITCH WITH TRAYER UNIVERSAL FUSE WELL AND VISIBLE DISCONNECT 15 KV TRAYER CAT.#102S2BSF2_M3 AND 25 KV TRAYER CAT.#112S2BSF2_M3

DRAWING NUMBER 090617 REVISION A