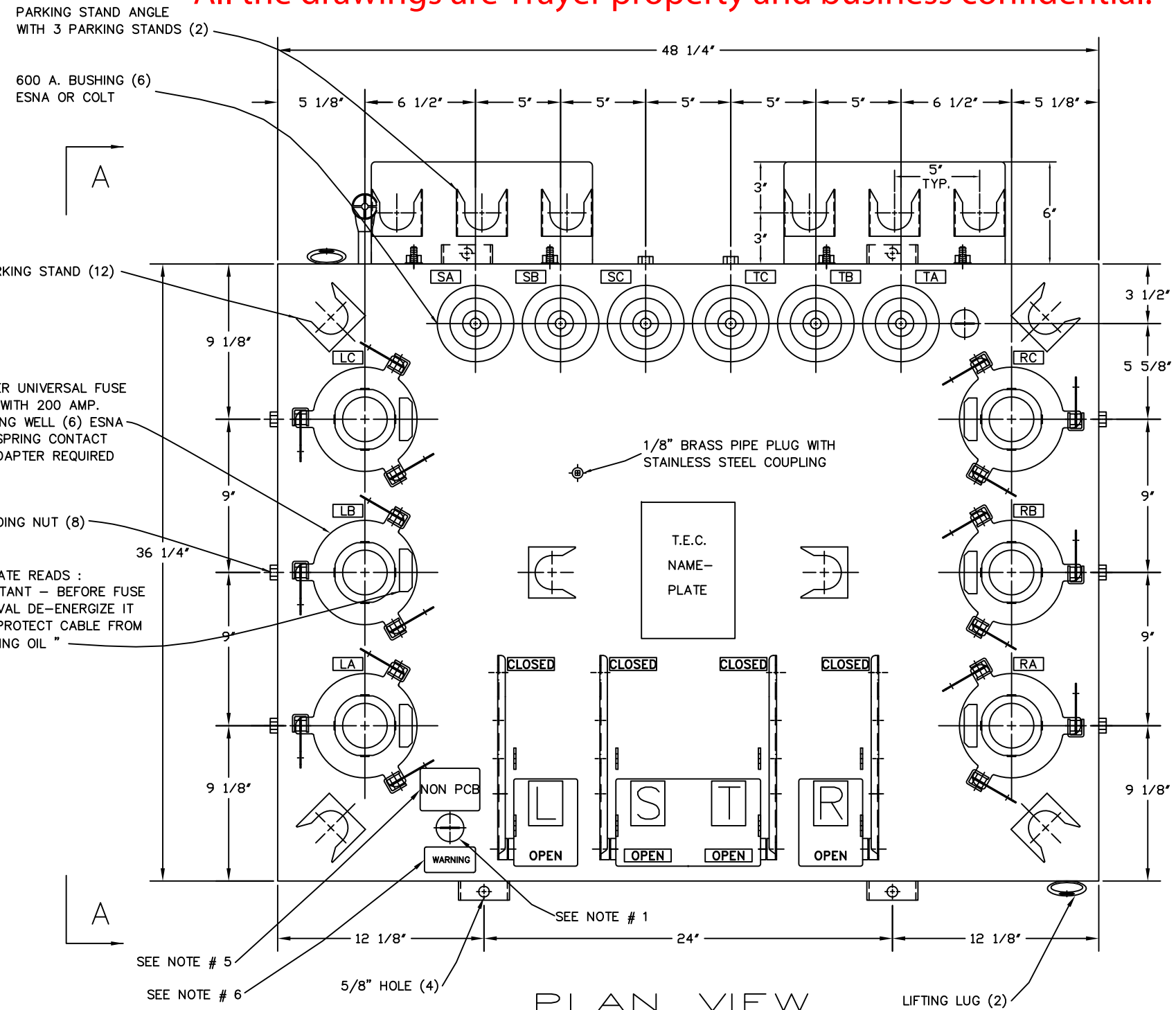
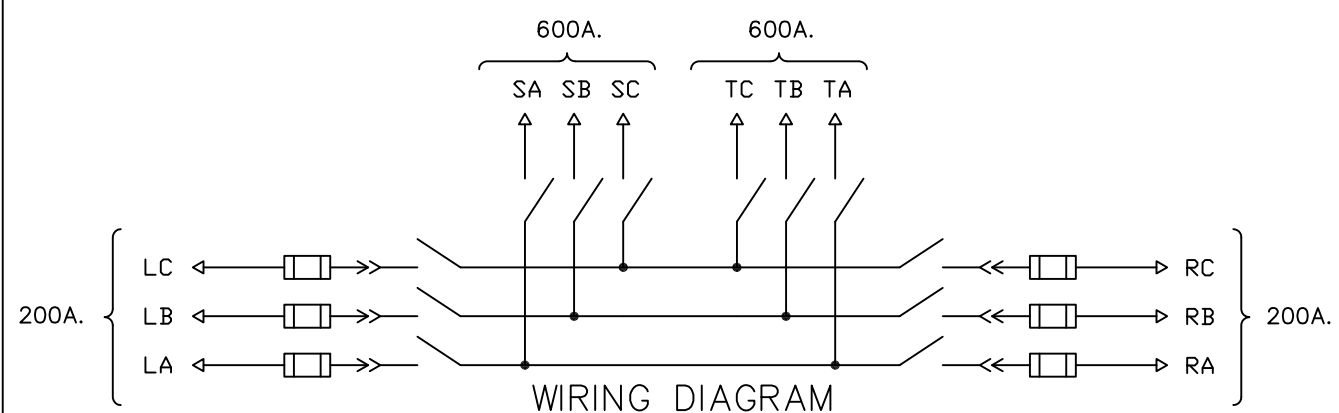


VIEW A-A



PLAN VIEW

NOTES:

- 1- THE TRAYER CAT. 901B LIQUID LEVEL GAUGE IS A COMPLETELY STATIC DEVICE THAT ACTUALLY READS "LOW OIL" IF THE OIL DROPS BELOW PROPER LEVEL. IT IS AVAILABLE TO ALL SWITCH AND TRANSFORMER MANUFACTURERS IN ORDER TO PROMOTE INDUSTRY STANDARDIZATION.
- 2- THIS EQUIPMENT IS DESIGNED TO ACCEPT _____ KV LINE TO GROUND RATED FUSES. THESE FUSES ARE SUITABLE FOR USE ON A _____ KV 3 WIRE SYSTEM GROUNDED AT SOURCE.
- 3- THE ADDITION OF LETTER Y IN THE CATALOG NUMBER INDICATES THE UNIT IS FILLED WITH RTEMP FLUID.
- 4- FUSE WELL HAS SPRING CONTACT.
- 5- DECAL READS:
FILLED WITH NON PCB MINERAL OIL [LESS THAN 1 PPM] AT TIME OF MANUFACTURE NOTE REPLACE WITH EITHER Rtemp DECAL IF Rtemp IS USED OR ALPHA-1 FLUID DECAL.
- 6- DECAL READS:
WARNING WHEN SWITCH SIDE MOUNTED (BUSHINGS NOT ON TOP) LIQUID LEVEL GAUGE MUST BE NEAR TOP FOR OIL TO COVER BUSHINGS.
- 7- LETTER "A" AT THE END OF THE CATALOG NUMBER INDICATES ALPHA-1 INSULATION.

CATALOG NO.	NOMINAL KV	BIL Ø TO Ø & Ø TO GRD	BIL ACROSS OPEN CONTACT	APPROX. GROSS WEIGHT - LBS.
CAT.# 104BSF2_M18	15	125	95	2375

CATALOG LETTER INSERT	BUSHING AMPERE			
	L	R	T	S
A	200	200	200	200
B	200	200	600	600
D	200	200	200	600

TRAYER S.O.

TRAYER ENGINEERING CORPORATION
898 PENNSYLVANIA AVENUE
SAN FRANCISCO, CALIFORNIA 94107
(415) 285-7770

4 WAY SUBMERSIBLE VACUUM SWITCH WITH TRAYER UNIVERSAL FUSE WELL 15 KV TRAYER CAT.#104BSF2_M18

TOLERANCES ± 1/8"

DRAWING NUMBER: 840729
REVISION: C
01-26-04