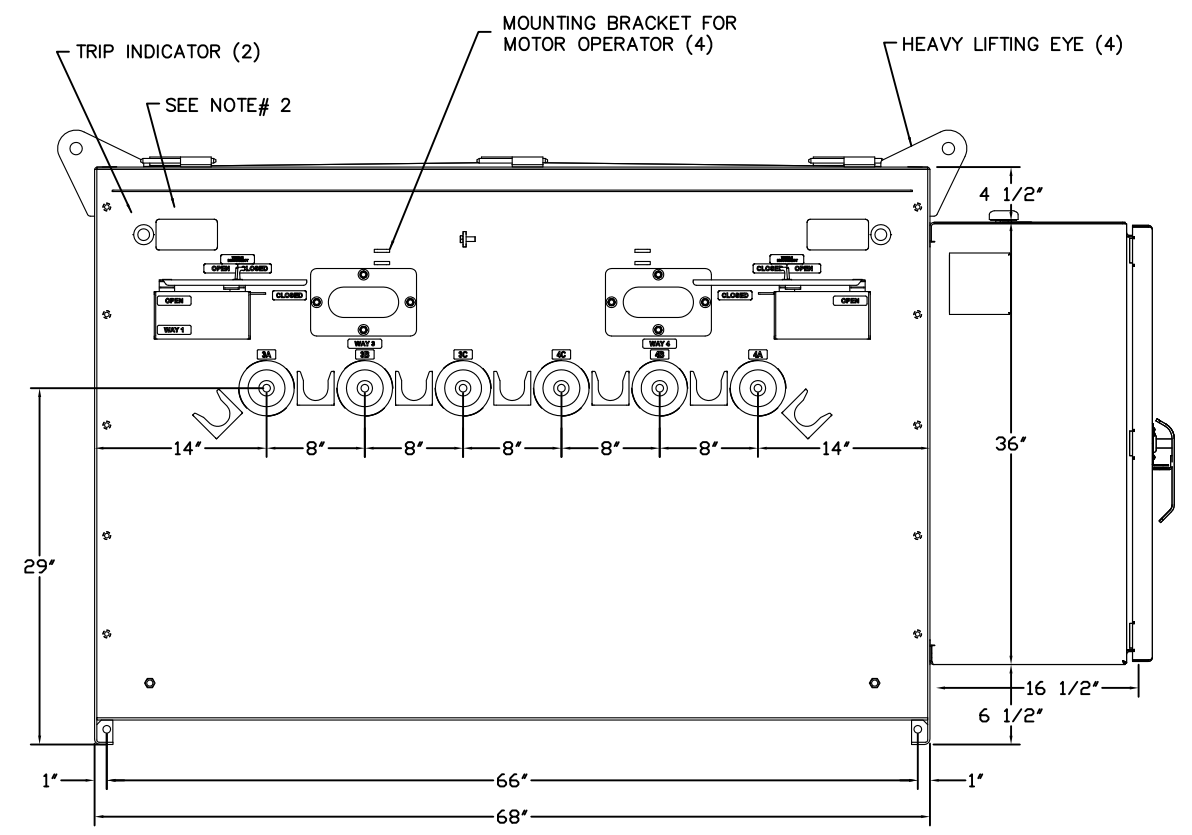


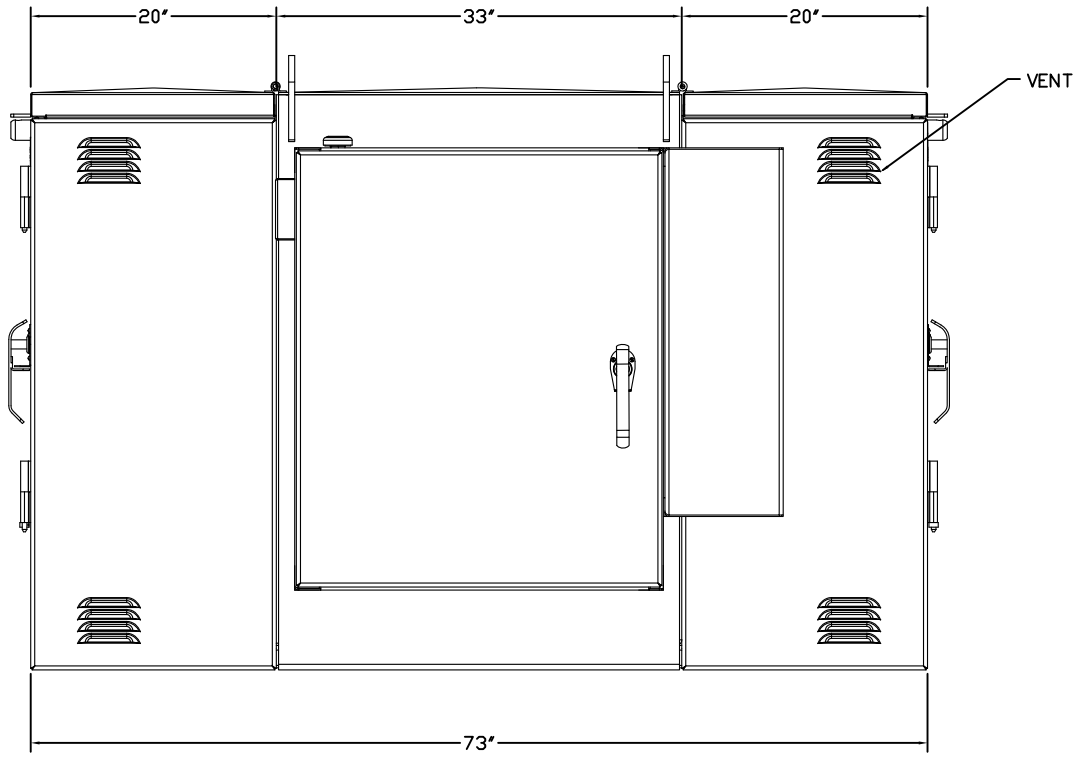
FRONT VIEW
(CABINET REMOVED)



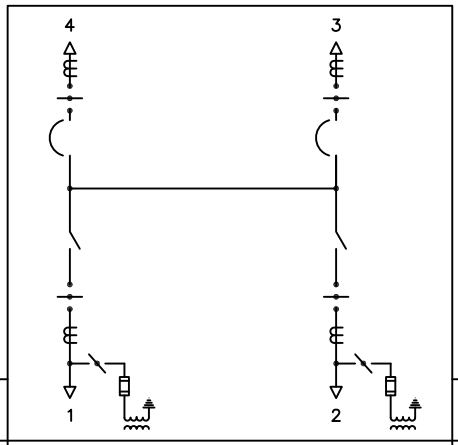
REAR VIEW
(CABINET REMOVED)

NOTES:

- 1- THE TRAYER CAT.# 901A LIQUID LEVEL GAUGE IS A COMPLETELY STATIC DEVICE THAT ACTUALLY READS "LOW OIL" IF THE OIL DROPS BELOW PROPER LEVEL. IT IS AVAILABLE TO ALL SWITCH AND TRANSFORMER MANUFACTURERS IN ORDER TO PROMOTE INDUSTRY STANDARDIZATION.
- 2- DECAL READS:
"BREAKER TRIPPED WHEN YELLOW INDICATOR PROJECTS IN TO THE SIGHT GLASS. TO RESET BREAKER, OPEN AND CLOSE OPERATING HANDLE"
- 3- DECAL READS:
WARNING
"POTENTIAL TRANSFORMER DISCONNECT SWITCH MUST BE IN OPEN POSITION WHEN DOING HIGH POTENTIAL TESTING."
- 4- MATERIAL:
OIL TANK : 7 GA.
CABINET : 11GA.
LIFT UP TOP : 14 GA.
- 5- DECAL READS:
LIQUID LEVEL INDICATOR READS "LOW OIL" WHEN OIL IS LOW.
- 6- DECAL READS:
FILLED WITH NON PCB MINERAL OIL [LESS THAN 1 PPM] AT TIME OF MANUFACTURE
- 7- POSITION INDICATOR FOR SWITCH
OPEN - SOURCE IS OPEN
CHARGED - SOURCE READY TO CLOSE
CLOSED - SOURCE IS CLOSED
TRIPPED - SOURCE TRIPPED OPEN
- 8- VISIBLE DISCONNECT AND VACUUM INTERRUPTER ARE INTERLOCKED SO THAT VACUUM INTERRUPTER MUST BE OPEN BEFORE VISIBLE DISCONNECT CAN BE OPERATED.
- 9- DECAL READS:
PT SWITCH
- 10- DECAL READS:
PULL TO CLOSE MANUALLY



SIDE VIEW



NOMINAL KV		BIL Ø TO Ø & Ø TO GRD	BIL RATING OF CONTACT
15	CAT.# 3805_9VD4M11WY-211-2-ATS-HS	95	95
APPROX. WT.-LBS.	5510		

OPTIONAL ADDITIONS WITH CATALOG NUMBER SUFFIXES	
CATALOG SUFFIX	DESCRIPTION
A	ALPHA-1 FLUID
D	DRAIN VALVE WITH SAMPLER
K	PROVISION FOR KEY INTERLOCK ON SWITCH HANDLE
LL	2 LIQUID LEVEL GAUGES (ONE IS STANDARD)
N	COPPER GROUND BUS
W	304 STAINLESS STEEL TANK
Y	304 STAINLESS STEEL CABINET

CATALOG LETTER INSERT	BUSHING AMPERE			
	1	2	3	4
A	200	200	200	200
B	600	600	200	200
C	600	600	600	600
D	600	200	200	200
E	600	600	200	600

TRAYER S.O.

TRAYER ENGINEERING CORPORATION
898 PENNSYLVANIA AVENUE
SAN FRANCISCO, CALIFORNIA 94107
(415) 285-7770

SCADA - TEC
15 KV LIQUID INSULATED
PADMOUNTED VACUUM SWITCHGEAR WITH
VISIBLE DISCONNECT AND VACUUM FAULT
INTERRUPTERS WITH HIGH SPEED ATS

DRAWING NUMBER: 110601
REVISION: B
01-06-12

TOLERANCES ± 1/8"