



# Medium Voltage Switchgear Series 100-SD Solid Dielectric Insulated Vacuum Load Break Switch

## *25kV, 600A, 3WAY 3 WAYS SWITCHED SUBMERSIBLE VACUUM LOAD BREAK SWITCH*

Trayer Solid Dielectric Switchgear is a form fit function substitute for existing Trayer products and is an excellent alternative for applications where liquid or gas insulation is not preferred. Trayer Solid Switchgear utilizes the same proven vacuum technology (all high voltage operations occur in a vacuum contact bottle) backed by over 50 years of industry leading quality and performance with the convenience of **solid polymer insulation to insulate the active switching components**. Trayer Solid features:

- 25kV 60Hz class three-phase gang-operated submersible vacuum load interrupting switchgear assembly with continuous rating of 630 Amps for use in underground alternating current distribution systems
- Unit includes a sealed port, pressure gauge for the visual indication of tank sealing integrity.
- Manual or Remote Operation; Motor Operator Option
- Industry's smallest footprint load interrupting switchgear
- Time proven over toggle drive mechanism for added safety

About Trayer Switchgear: products available in a variety of dielectric insulation types, all with the patented Trayer Vacuum Switch technology:

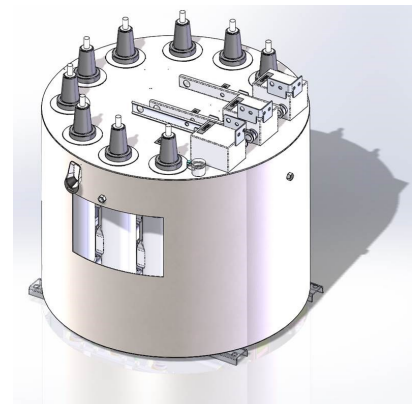
Liquid Insulation  
SF6 Insulation  
Solid Insulation

and feature

- Maintenance free switchgear
- Dead-front design
- 100% 304 or 304L Stainless Steel tank construction
- All load make and break occurs in sealed vacuum bottles
- Fully submersible
- Hermetically sealed, maintenance free switch tanks with pressure gage
- Copper internal bus structure
- 100% corrosion proof 304 stainless steel construction
- 15/25kV Class ratings
- Remote/SCADA operation options
- Auxiliary contacts available on all switched ways
- Choice of load break or non load break parking stands
- Designed for 10,000 operations under the most rugged conditions
- Industry leading warranty and service
- All Trayer products conform to applicable ANSI standards



Trayer 100 series Solid Dielectric Load Break Switch  
25kV, 600A, 3 ways, 3 ways switched  
Submersible Vacuum Load Break Switch



Trayer Engineering, San Francisco, CA is the recognized leader in tailoring equipment to the specific demands of customers. Trayer switchgear products are distinguished by their rugged, fully sealed and welded 304 stainless steel construction built for decades of trouble-free operation. Units also feature options to include the latest in advanced electronic controls.

Trayer Engineering Corporation 898 Pennsylvania Avenue San Francisco, California 94107 USA

800-377-1774 sales@trayer.com

www.trayer.com

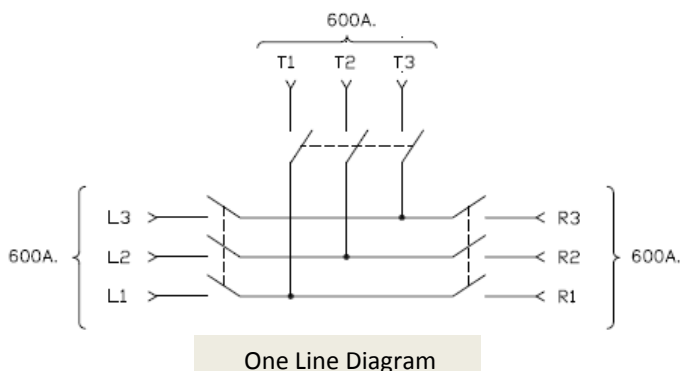
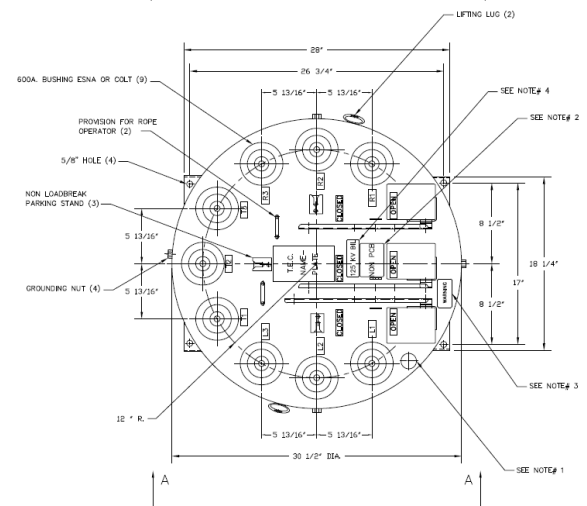
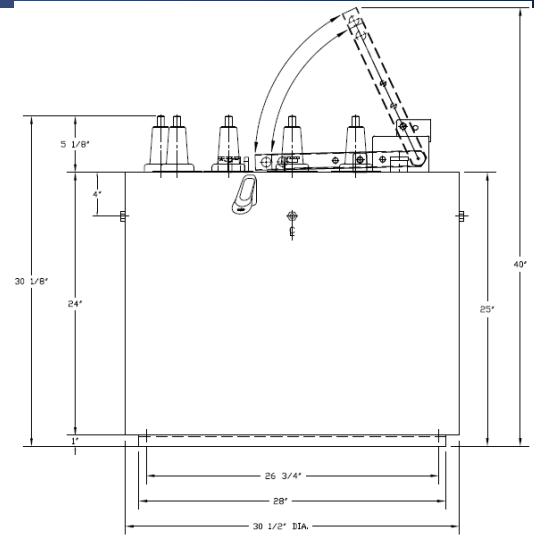




## Series 100-SD Vacuum Load Break Switch *Solid Dielectric Insulated Switchgear*

Nominal Voltage (Series)	25 kV
Maximum Design Voltage	27 kV
Device	Load Break Switch
BIL Phase-to-Phase, Phase-to-Ground	125 kV
BIL Across Open Contacts	125 kV
One Minute Withstand Voltage (60Hz)	60 kV
One Minute Withstand Routine Test Voltage (60Hz)	40 kV
Continuous Current	630 A
Load Switching	630 A
Mechanical Switch Operations	10,000
Peak Current	41.6 kA
Maximum Emergency 3-Time Interrupting	2000A
Momentary (1 s) & Make and Latch 600A ways (Symmetrical) 600A ways (Asymmetrical)	16 kA 24.8 kA

These ratings are applicable for altitudes not exceeding 1000 m and ambient air temperatures in the range of -30 °C to +40 °C.



### The Trayer Way

With over 50 years of industry experience as a leading producer of medium voltage switchgear, Trayer has a sterling reputation for designing and building the toughest and smartest products on the market. Trayer is a pioneer in vacuum breaker technology and continues to lead the industry with designs that meet the demands for highly reliable electrical grids. Trayer gear is unsurpassed for reliability, safety, and ease-of-operation. That's why Trayer switchgear is specified by utilities around the globe. By combining leading edge engineering, high quality manufacturing and an industry leading commitment to customer service, you can depend on Trayer Switchgear to perform decade after decade.

