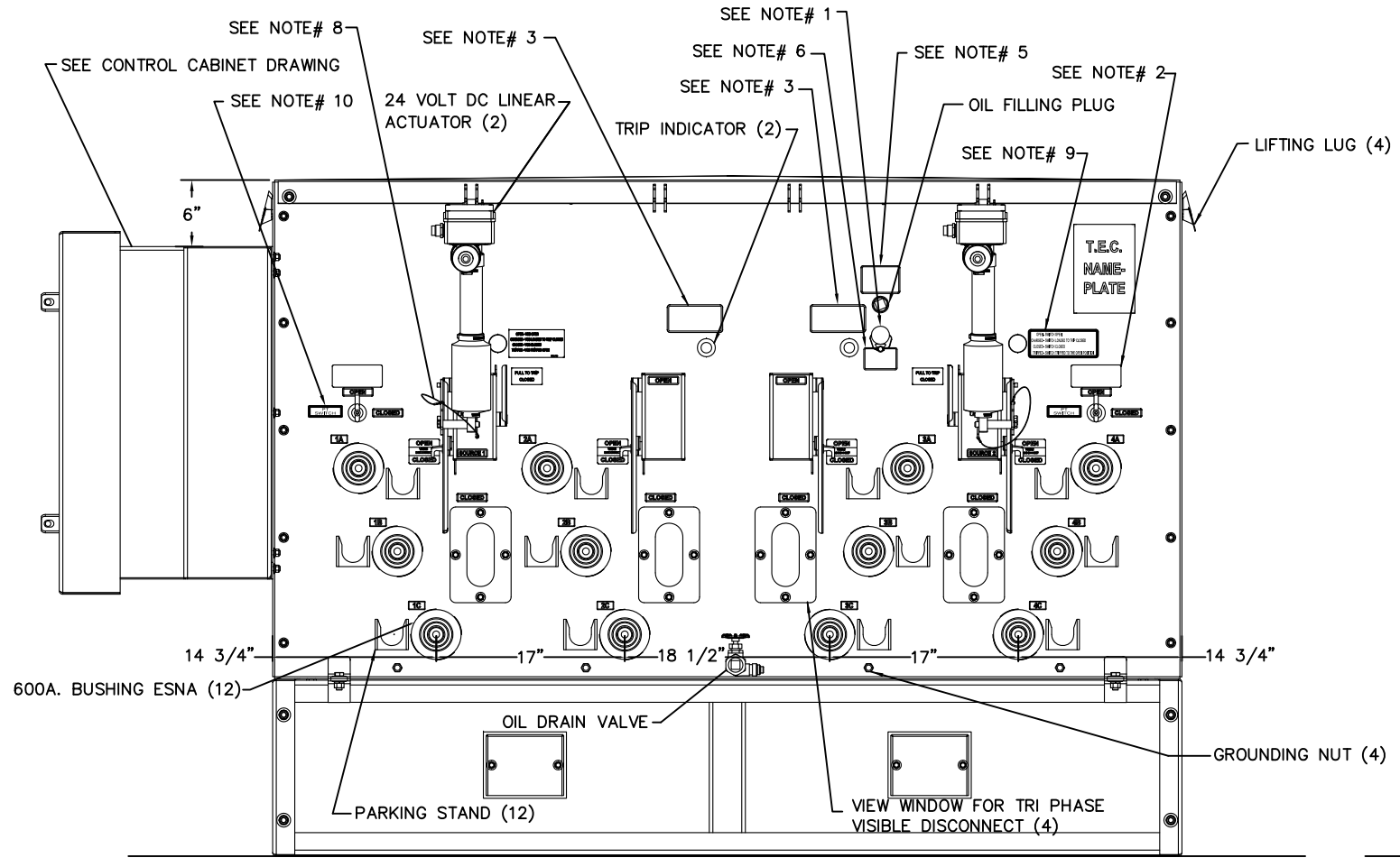
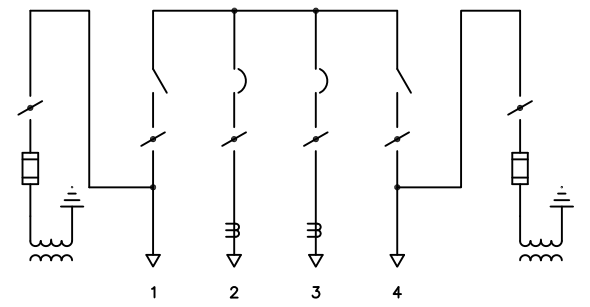
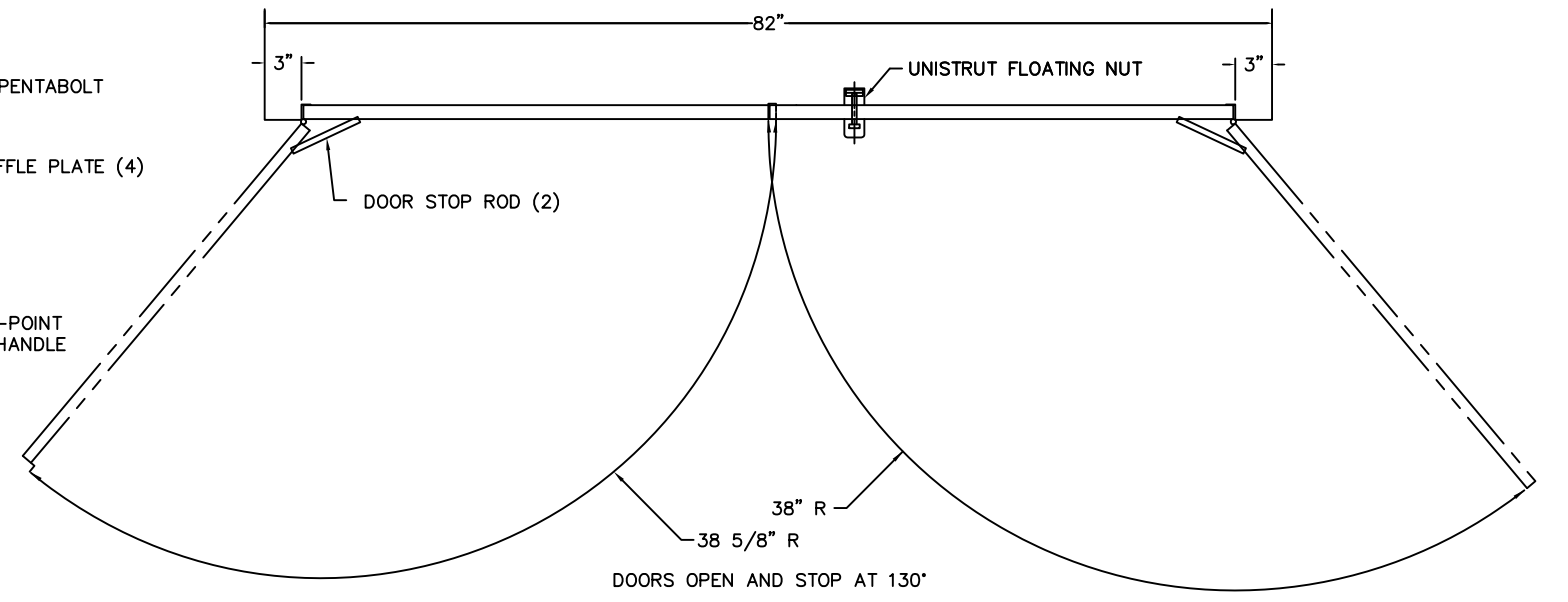
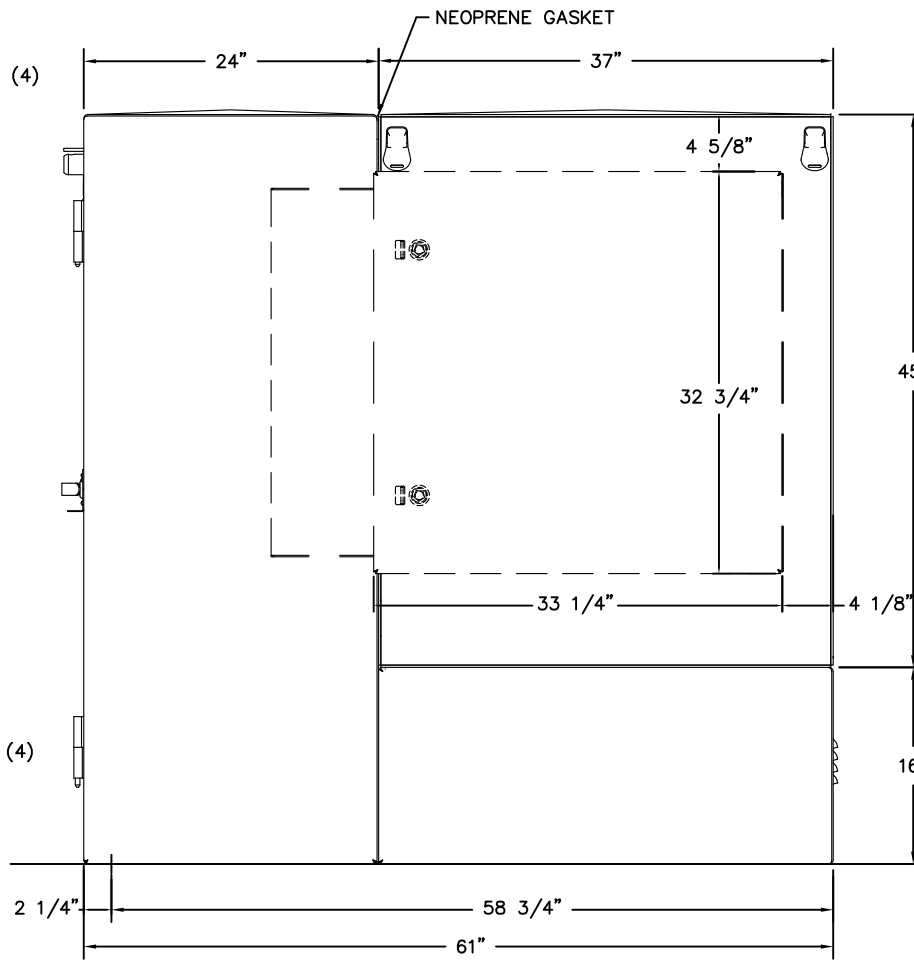


FRONT VIEW



FRONT VIEW
 (CABINET REMOVED)



SIDE VIEW

NOTES:

- 1- THE TRAYER CAT.# 901A LIQUID LEVEL GAUGE IS A COMPLETELY STATIC DEVICE THAT ACTUALLY READS "LOW OIL" IF THE OIL DROPS BELOW PROPER LEVEL. IT IS AVAILABLE TO ALL SWITCH AND TRANSFORMER MANUFACTURERS IN ORDER TO PROMOTE INDUSTRY STANDARDIZATION.
- 2- NAMEPLATE READS: "POTENTIAL TRANSFORMER DISCONNECT SWITCH MUST BE IN OPEN POSITION WHEN DOING HIGH POTENTIAL TESTING."
- 3- DECAL READS: "BREAKER TRIPPED WHEN YELLOW INDICATOR PROJECTS IN TO THE SIGHT GLASS. TO RESET BREAKER, OPEN AND CLOSE OPERATING HANDLE"
- 4- MATERIAL: OIL TANK : 7 GA. STAINLESS STEEL
 CABINET & BASE : 11 GA. STAINLESS STEEL
- 5- DECAL READS: FILLED WITH NON PCB MINERAL OIL [LESS THAN 1 PPM] AT TIME OF MANUFACTURE
- 6- DECAL READS: LIQUID LEVEL INDICATOR READS "LOW OIL" WHEN OIL IS LOW.
- 7- WEIGHT OF UNIT : 5615 LB.
- 8- RETAINER CABLE ON HITCH PIN
- 9- POSITION INDICATOR FOR SWITCH
 OPEN - SOURCE IS OPEN
 CHARGED - SOURCE READY TO CLOSE
 CLOSED - SOURCE IS CLOSED
 TRIPPED - SOURCE TRIPPED OPEN
- 10- DECAL READS: PT SWITCH

TRAYER S.O.

FINISH	DARK GREEN	TRAYER ENGINEERING CORPORATION 898 PENNSYLVANIA AVENUE SAN FRANCISCO, CALIFORNIA 94107 (415) 285-7770
MATL	SEE NOTE# 4	
SCALE	1/8" = 1"	TRAYER 15 KV PADMOUNTED LIQUID INSULATED VACUUM SWITCHGEAR ASSEMBLY CAT.#3800C9VD4M8-211(2) ATO
DR. BY	RKOWDLEY	
CK. BY	BAB	
APPVD.	BAB	
DATE	07-13-09	DRAWING NUMBER 090701
UNIT TYPE	PADMOUNT	
TOLERANCES ± 1/8"		REVISION F 09-29-10