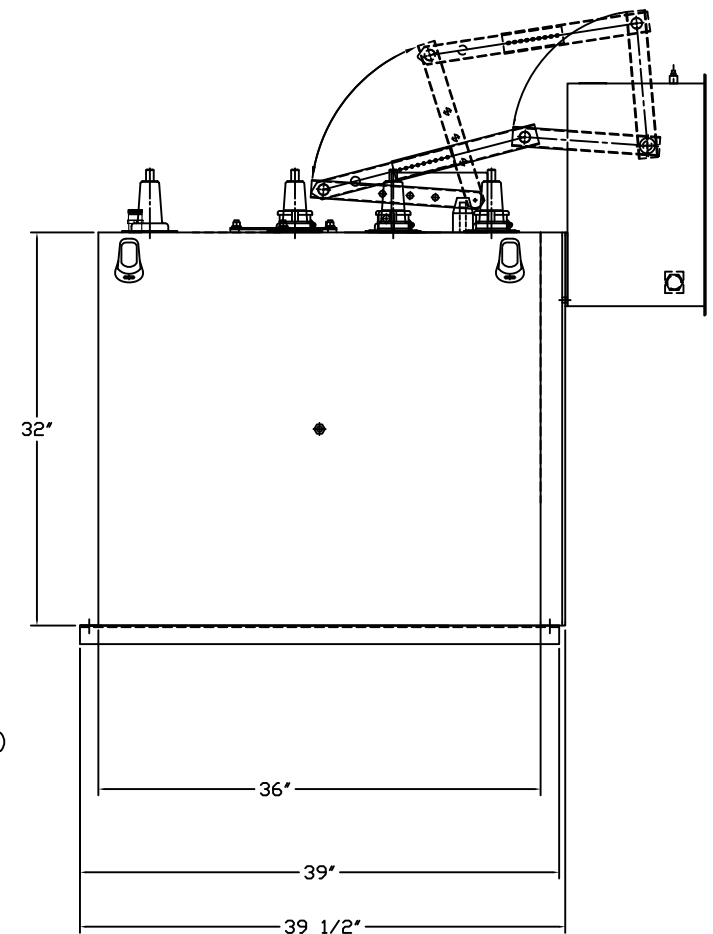
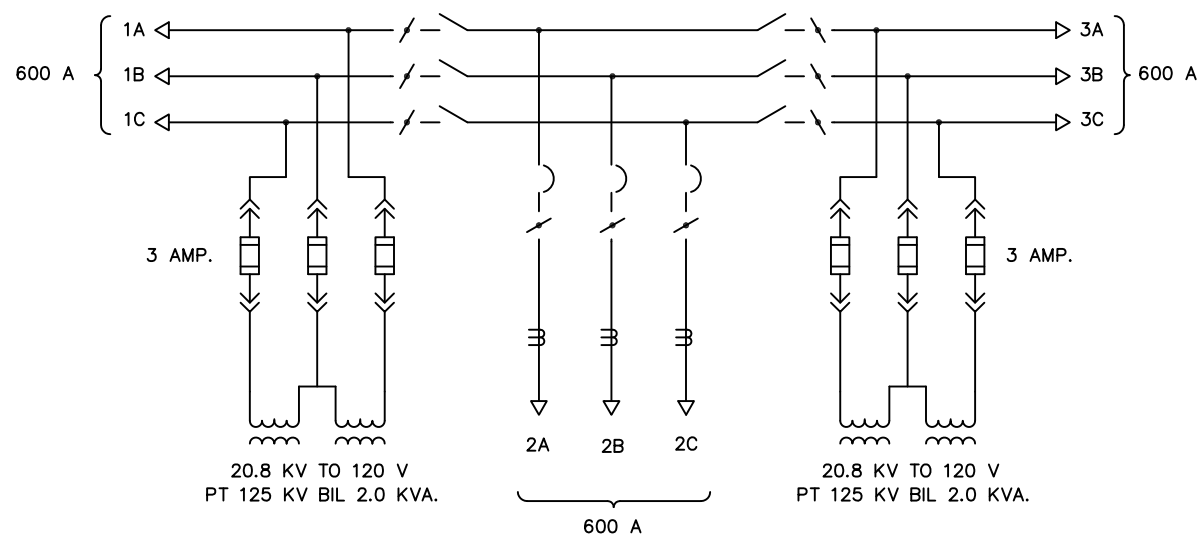


WALL MOUNTED
CONTROL CABINET
(SEE DWG 091202)

TOP VIEW



SIDE VIEW
(CONTROL CABINET NOT SHOWN)



THREE LINE DIAGRAM

NOTES:

- 1- THE TRAYER CAT.# 901A LIQUID LEVEL GAUGE IS A COMPLETELY STATIC DEVICE THAT ACTUALLY READS "LOW OIL" IF THE OIL DROPS BELOW PROPER LEVEL. IT IS AVAILABLE TO ALL SWITCH AND TRANSFORMER MANUFACTURERS IN ORDER TO PROMOTE INDUSTRY STANDARDIZATION.
- 2- NAMEPLATE READS:
"BREAKER TRIPPED WHEN YELLOW INDICATOR PROJECTS IN TO THE SIGHT GLASS. TO RESET BREAKER, OPEN AND CLOSE OPERATING HANDLE"
- 3- NAMEPLATE READS:
"WARNING - POTENTIAL TRANSFORMER FUSE ENERGIZED FROM SWITCHGEAR BUS. TO CHANGE FUSE FIRST DE-ENERGIZE BUS."
- 4- MATERIAL:
OIL TANK : 7 GA. STAINLESS STEEL
MOTOR OPERATORS : 14 GA. STAINLESS STEEL
CONTROL CABINET : 11 GA. STAINLESS STEEL
- 5- DECAL READS:
FILLED WITH NON PCB MINERAL OIL [LESS THAN 1 PPM] AT TIME OF MANUFACTURE
- 6- NAMEPLATE READS:
CURRENT TRANSFORMER LEADS DO NOT OPEN CIRCUIT WHEN CURRENT IS FLOWING
- 7- WEIGHT: SWITCH TANK: 4265 LBS
CONTROL CABINET: 325 LBS
- 8- POSITION INDICATOR FOR SWITCH
OPEN = SWITCH OPEN
CHARGED = SWITCH LOADED TO TRIP CLOSED
CLOSED = SWITCH CLOSED
TRIPPED = SWITCH TRIPPED TO THE OPEN POSITION

TOLERANCES ± 1/8"

TRAYER S.O.

FINISH	-	TRAYER ENGINEERING CORPORATION
MATL	SEE NOTE# 4	898 PENNSYLVANIA AVENUE SAN FRANCISCO, CALIFORNIA 94107 (415) 285-7770
SCALE	1/8" = 1"	TRAYER 25 KV SUBMERSIBLE LIQUID INSULATED, HIGH-SPEED AUTO-THROWOVER VACUUM SWITCHGEAR CAT.#3111-2CVD3M1-201(2)-ATS-HS
DR. BY	R.KOWDLEY	DRAWING NUMBER
CK. BY	BAB	091201
APPVD.	BAB	REVISION
DATE	12-03-09	A
UNIT TYPE	SUBMERSIBLE	