



Grid Smart. Grid Tough.

Medium Voltage Padmount Switchgear SD3800 Series Solid Dielectric Insulated Vacuum Fault Interrupter

Storm Hardened Solid Dielectric Switchgear

Trayer Solid Dielectric Switchgear is a form fit function substitute for existing Trayer products and is an excellent alternative for applications where liquid or gas insulation is not preferred. Trayer Solid Switchgear utilizes the same proven vacuum technology (all high voltage operations occur in a vacuum contact bottle) backed by over 50 years of industry leading quality and performance with the convenience of **cycloaliphatic solid polymer insulation of the active switching components.**

Trayer Solid features:

- 15kV and 25kV 60Hz class three-phase gang-operated submersible vacuum load interrupting switchgear assembly with continuous rating of 630 Amps for use in alternating current distribution systems
- Unit includes a sealed port, pressure gauge for the visual indication of tank sealing integrity.
- Manual or Remote Operation; Motor Operator Option
- Industry's smallest footprint solid dielectric load interrupting switchgear
- Time proven over toggle drive mechanism for added safety

**see one line diagrams; number of ways is variable by model*

About Trayer Switchgear: Products are available in a variety of dielectric insulation types, all with the patented Trayer Vacuum Switch technology:

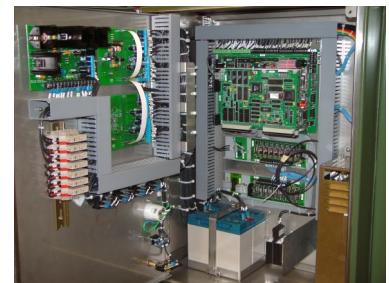
Liquid Insulation—SF6 Insulation—Solid Polymer Insulation

and feature

- Ultra Low Maintenance switchgear
- Dead-front design
- 100% 304 or 304L corrosion resistant Stainless Steel construction
- All load make and break occurs in sealed vacuum bottles
- Fully submersible
- Hermetically sealed, maintenance free switch tanks with pressure gage
- Copper internal bus structure
- Remote/SCADA operation options
- Auxiliary contacts available on all switched ways
- Load break parking stands
- Designed for the most rugged conditions
- Industry leading warranty and service
- All Trayer products conform to applicable ANSI, IEEE, and IEC standards



Trayer 3800 series Solid Dielectric VFI
25kV, 600A, 4 ways, 2 ways protected
Padmount Vacuum Fault Interrupter



Trayer VFI Low Voltage Cabinet

The Trayer Way

With over 50 years of industry experience as a leading producer of medium voltage switchgear, Trayer has a sterling reputation for designing and building the toughest and smartest products on the market. Trayer is a pioneer in vacuum breaker technology and continues to lead the industry with designs that meet the demands for highly reliable electrical grids. Trayer gear is unsurpassed for reliability, safety, and ease-of-operation. That's why Trayer switchgear is specified by utilities around the globe. By combining leading edge engineering, high quality manufacturing and an industry leading commitment to customer service, you can depend on Trayer Switchgear to perform .



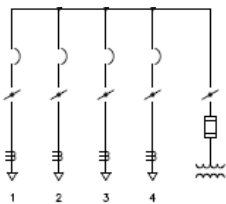
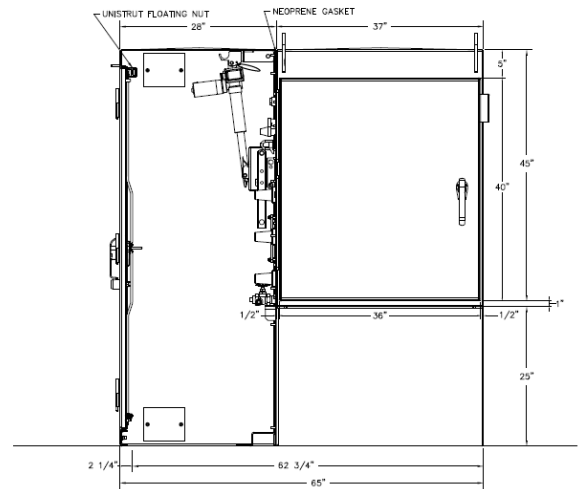
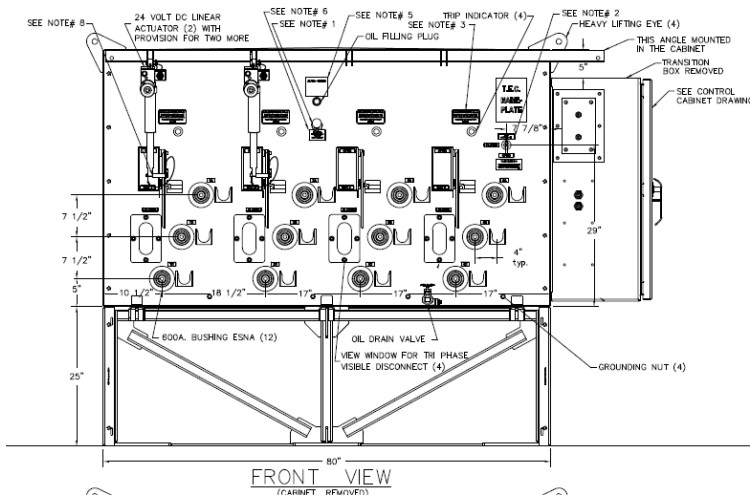


Grid Smart. Grid Tough.

Medium Voltage Padmount Switchgear SD3800 Series Solid Dielectric Insulated Vacuum Fault Interrupter

Trayer Solid Dielectric Ratings for the Unit/System Voltage								
Nominal Voltage (Series)	15kV				25kV			
	15.5kV				27kV			
Maximum Design Voltage								
Device	Load Break Switch		Vacuum Fault Interrupter		Load Break Switch		Vacuum Fault Interrupter	
BIL Phase-to-Phase, Phase-to-Ground	110kV	110kV	110kV	110kV	125kV	125kV	125kV	125kV
BIL Across Open Contacts	110kV	110kV	110kV	110kV	125kV	125kV	125kV	125kV
One Minute Withstand (60Hz)	34kV	34kV	34kV	34kV	40kV	40kV	40kV	40kV
Continuous Current	630A	630A	630A	630A	630A	630A	630A	630A
Load Switching	630A	630A	630A	630A	630A	630A	630A	630A
Peak Current	41.6kA	52kA	41.6kA	52kA	41.6kA	52kA	41.6kA	52kA
Load Break Operations at Full Load	5,000	5,000	N/A	N/A	5,000	5,000	N/A	N/A
Maximum Emergency Three-Time Interrupting	2000A	2000A	N/A	N/A	2000A	2000A	N/A	N/A
Number of Fault Interruptions at 16kA	N/A	N/A	65	65	N/A	N/A	65	65
Short-time Withstand Current (1s), Short Circuit Current, and Fault-making Current 600A Symmetrical	16kA	20kA	16kA	20kA	16kA	20kA	16kA	20kA
Short-time Withstand Current (1s), Short Circuit Current, and Fault-making Current 600A Asymmetrical	25.6kA	32kA	25.6kA	32kA	25.6kA	32kA	25.6kA	32kA

*Short-circuit withstand current ratings may be limited by the capabilities of bushings, separable connectors, terminations or cables used in conjunction with this switchgear device.



ONE LINE DIAGRAM

Available as Single side or double side padmount designs

Standard Trayer 10 shown. Trayer SD3800 series available for all Trayer VFI configurations.*

Contact factory or your local Trayer Representative for information and details

Trayer Engineering Corporation 898 Pennsylvania Avenue San Francisco, California 94107

USA

