



Grid Smart. Grid Tough.

Medium Voltage Padmount Switchgear SD800 Series Solid Dielectric Insulated Vacuum Load Break Switch

15kV and 25kV, 16kA and 20kA, 600A, 4WAY* VACUUM LOAD BREAK SWITCH

Trayer Solid Dielectric Switchgear is a form fit function substitute for existing Trayer products and is an excellent alternative for applications where liquid or gas insulation is not preferred. Trayer Solid Switchgear utilizes the same proven vacuum technology (all high voltage operations occur in a vacuum contact bottle) backed by over 50 years of industry leading quality and performance with the convenience of **cycloaliphatic solid polymer insulation of the active switching components.**

Trayer Solid features:

- 15kV and 25kV 60Hz class three-phase gang-operated submersible vacuum load interrupting switchgear assembly with continuous rating of 630 Amps for use in alternating current distribution systems
- Unit includes a sealed port, pressure gauge for the visual indication of tank sealing integrity.
- Manual or Remote Operation; Motor Operator Option
- Industry's smallest footprint solid dielectric load interrupting switchgear
- Time proven over toggle drive mechanism for added safety

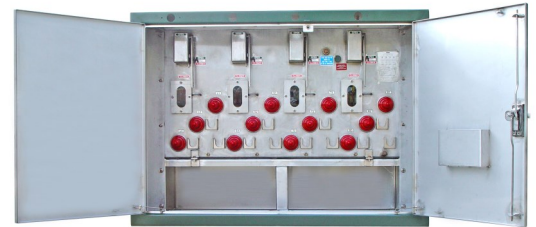
**see one line diagrams; number of ways is variable by model*

About Trayer Switchgear: Products are available in a variety of dielectric insulation types, all with the patented Trayer Vacuum Switch technology:

Liquid Insulation—SF6 Insulation—Solid Polymer Insulation

and feature

- Maintenance free switchgear
- Dead-front design
- 100% 304 or 304L corrosion resistant Stainless Steel construction
- All load make and break occurs in sealed vacuum bottles
- Fully submersible
- Hermetically sealed, maintenance free switch tanks with pressure gage
- Copper internal bus structure
- Remote/SCADA operation options
- Auxiliary contacts available on all switched ways
- Choice of load break or non load break parking stands
- Designed for 10,000 operations under the most rugged conditions
- Industry leading warranty and service
- All Trayer products conform to applicable ANSI, IEEE, and IEC standards



Trayer 800 series Solid Dielectric Load Break Switch
25kV, 600A, 4 ways, 4 ways switched
Padmount Vacuum Load Break Switch



Trayer vacuum switch frame assembly with
cycloaliphatic resin insulation



Trayer padmount switch

Trayer Engineering, San Francisco, CA is the recognized leader in tailoring equipment to the specific demands of customers. Trayer switchgear products are distinguished by their rugged, fully sealed and welded 304 stainless steel construction built for years of trouble-free operation. Units also feature options to include the latest in advanced electronic controls.



Grid Smart. Grid Tough.

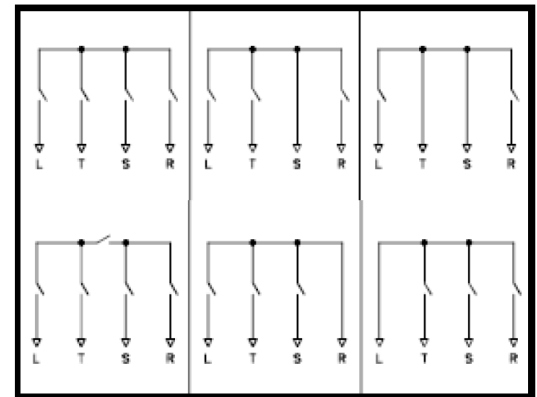
SD800 Series Padmount Vacuum Load Break Switch *Solid Dielectric Insulated Switchgear*

Load Break Switch General Specifications				
Ratings	15kV 16kA	15kV 20kA	25kV 16kA	25kV 20kA
Nominal Voltage (Series)	15 kV	15 kV	25 kV	25 kV
Maximum Design Voltage	15.5 kV	15.5 kV	27 kV	27 kV
Device	Load Break Switch	Load Break Switch	Load Break Switch	Load Break Switch
BIL Phase-to-Phase, Phase-to-Ground	110 kV	110 kV	125 kV	125 kV
BIL Across Open Contacts	110 kV	110 kV	125 kV	125 kV
One Minute Withstand Design Voltage (60Hz)	35kV	35kV	60 kV	60 kV
One Minute Withstand Routine Test Voltage (60Hz)	34 kV	34 kV	40 kV	40 kV
Continuous Current	630 A	630 A	630 A	630 A
Load Switching	630 A	630 A	630 A	630 A
Peak Current	41.6 kA	52 kA	41.6 kA	52 kA
Maximum Emergency 3-Time Interrupting	2000A	2000A	2000A	2000A
Short-time Withstand Current (1s) , Short Circuit Current, and Fault-making Current				
600A ways (Symmetrical)	16 kA	20 kA	16 kA	20 kA
600A ways (Asymmetrical)	25.6 kA	32 kA	25.6 kA	32 kA

*Short-circuit withstand current ratings may be limited by the capabilities of bushings, separable connectors, terminations or cables used in conjunction with this switchgear device.

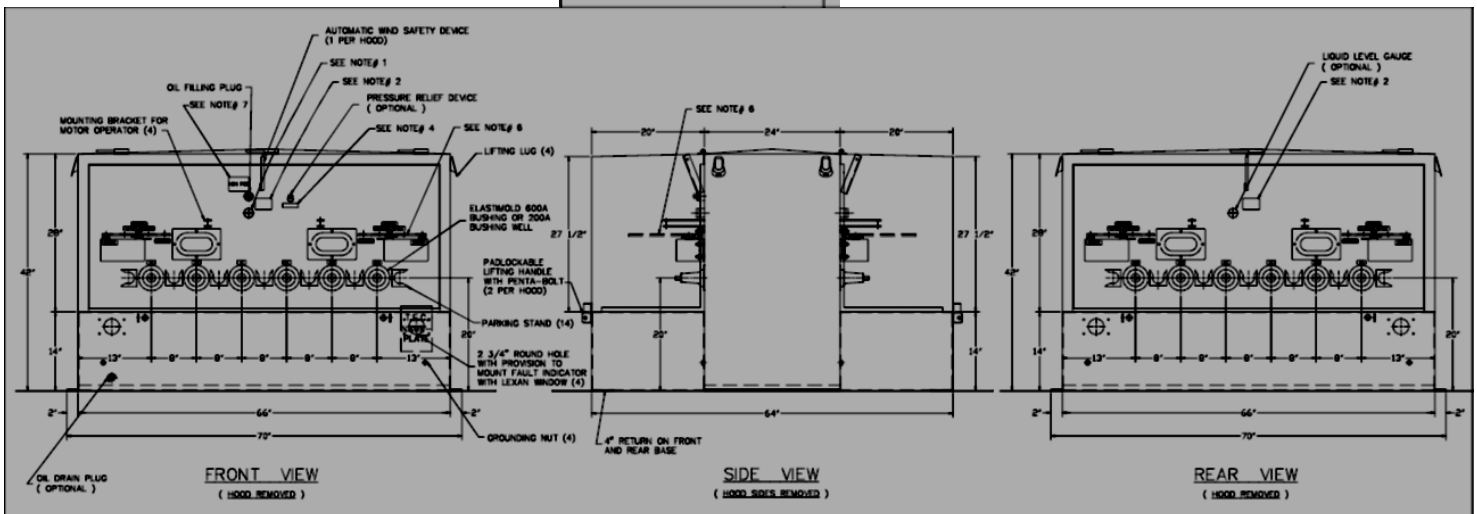
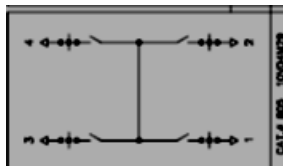
The Trayer Way

With over 50 years of industry experience as a leading producer of medium voltage switchgear, Trayer has a sterling reputation for designing and building the toughest and smartest products on the market. Trayer is a pioneer in vacuum breaker technology and continues to lead the industry with designs that meet the demands for highly reliable electrical grids. Trayer gear is unsurpassed for reliability, safety, and ease-of-operation. That's why Trayer switchgear is specified by utilities around the globe. By combining leading edge engineering, high quality manufacturing and an industry leading commitment to customer service, you can depend on Trayer Switchgear to perform .



One Line Diagrams

Single side or double side configuration available



Trayer Engineering Corporation 898 Pennsylvania Avenue San Francisco, California 94107 USA

800-377-1774 sales@trayer.com

www.trayer.com

