



# Medium Voltage Submersible Switchgear SD100 Series Solid Dielectric Insulated Vacuum Load Break Switch

## 15kV and 25kV, 16kA and 20kA, 600A, 3WAY \* VACUUM LOAD BREAK SWITCH

Trayer Solid Dielectric Switchgear is a form fit function substitute for existing Trayer products and is an excellent alternative for applications where liquid or gas insulation is not preferred. Trayer Solid Switchgear utilizes the same proven vacuum technology (all high voltage operations occur in a vacuum contact bottle) backed by over 50 years of industry leading quality and performance with the convenience of **cycloaliphatic solid polymer insulation of the active switching components.**

### Trayer Solid features:

- 15kV and 25kV 60Hz class three-phase gang-operated submersible vacuum load interrupting switchgear assembly with continuous rating of 630 Amps for use in underground alternating current distribution systems
- Unit includes a sealed port, pressure gauge for the visual indication of tank sealing integrity.
- Manual or Remote Operation; Motor Operator Option
- Industry's smallest footprint solid dielectric load interrupting switchgear
- Time proven over toggle drive mechanism for added safety

\*see one line diagrams ; number of ways is variable by model

**About Trayer Switchgear: products available in a variety of dielectric insulation types, all with the patented Trayer Vacuum Switch technology:**

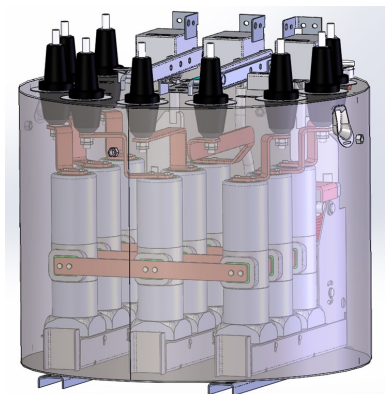
**Liquid Insulation SF6 Insulation Solid Insulation**

and feature

- Maintenance free switchgear
- Dead-front design
- 100% 304 or 304L Stainless Steel tank construction
- All load make and break occurs in sealed vacuum bottles
- Fully submersible
- Hermetically sealed, maintenance free switch tanks with pressure gage
- Copper internal bus structure
- 100% corrosion resistant 304 stainless steel construction
- Remote/SCADA operation options
- Auxiliary contacts available on all switched ways
- Choice of load break or non load break parking stands
- Industry leading warranty and service
- All Trayer products conform to applicable ANSI, IEEE and IEC standards



Trayer 100 series Solid Dielectric Load Break Switch  
25kV, 600A, 3 ways, 3 ways switched  
Submersible Vacuum Load Break Switch



Trayer Engineering, San Francisco, CA is the recognized leader in tailoring equipment to the specific demands of customers. Trayer switchgear products are distinguished by their rugged, fully sealed and welded 304 stainless steel construction built for years of trouble-free operation. Units also feature options to include the latest in advanced electronic controls.

Trayer Engineering Corporation 898 Pennsylvania Avenue San Francisco, California 94107 USA

800-377-1774 sales@trayer.com

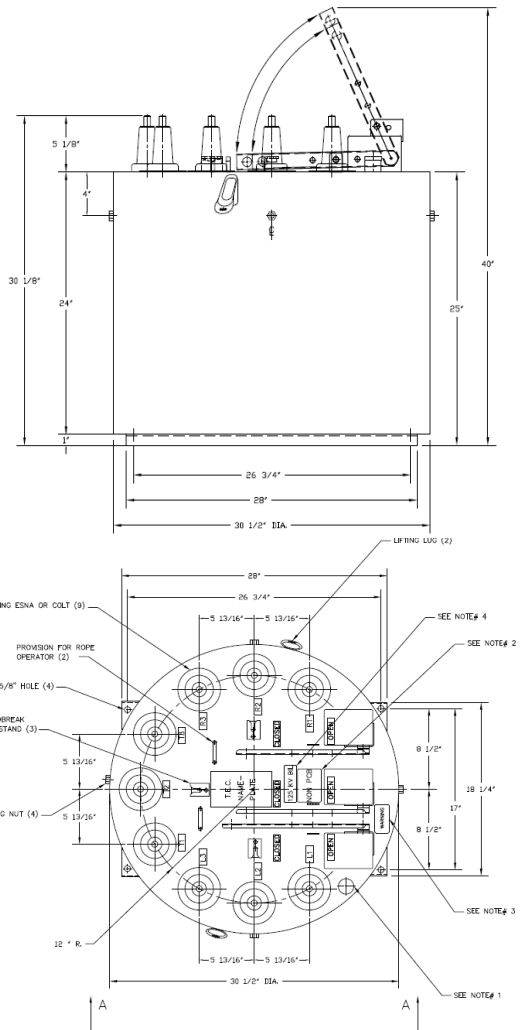
www.trayer.com





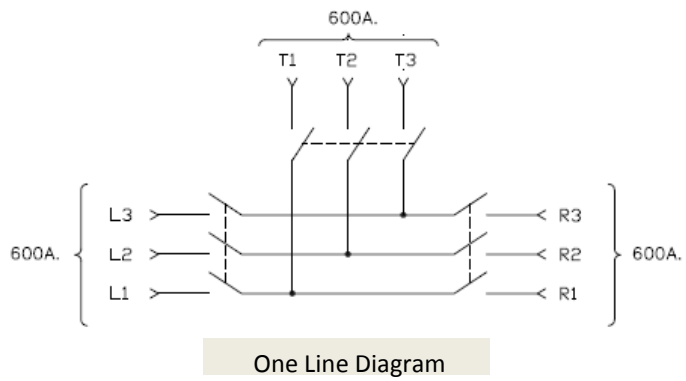
# SD100 Series Submersible Vacuum Load Break Switch *Solid Dielectric Insulated Switchgear*

| Load Break Switch General Specifications  |                   |                   |                   |                   |
|---|-------------------|-------------------|-------------------|-------------------|
| Ratings   | 15kV 16kA         | 15kV 20kA         | 25kV 16kA         | 25kV 20kA         |
| Nominal Voltage (Series)  | 15 kV             | 15 kV             | 25 kV             | 25 kV             |
| Maximum Design Voltage  | 15.5 kV           | 15.5 kV           | 27 kV             | 27 kV             |
| Device  | Load Break Switch | Load Break Switch | Load Break Switch | Load Break Switch |
| BIL Phase-to-Phase, Phase-to-Ground   | 110 kV            | 110 kV            | 125 kV            | 125 kV            |
| BIL Across Open Contacts  | 110 kV            | 110 kV            | 125 kV            | 125 kV            |
| One Minute Withstand Design Voltage (60Hz)  | 35kV              | 35kV              | 60 kV             | 60 kV             |
| One Minute Withstand Routine Test Voltage (60Hz)                                    | 34 kV             | 34 kV             | 40 kV             | 40 kV             |
| Continuous Current  | 630 A             | 630 A             | 630 A             | 630 A             |
| Load Switching  | 630 A             | 630 A             | 630 A             | 630 A             |
| Peak Current  | 41.6 kA           | 52 kA             | 41.6 kA           | 52 kA             |
| Maximum Emergency 3-Time Interrupting   | 2000A             | 2000A             | 2000A             | 2000A             |
| Short-time Withstand Current (1s) , Short Circuit Current, and Fault-making Current |                   |                   |                   |                   |
| 600A ways (Symmetrical)   | 16 kA             | 20 kA             | 16 kA             | 20 kA             |
| 600A ways (Asymmetrical)  | 25.6 kA           | 32 kA             | 25.6 kA           | 32 kA             |



Additional Configurations Available

\*Short-circuit withstand current ratings may be limited by the capabilities of bushings, separable connectors, terminations or cables used in conjunction with this switchgear device.



One Line Diagram

## The Trayer Way

With over 50 years of industry experience as a leading producer of medium voltage switchgear, Trayer has a sterling reputation for designing and building the toughest and smartest products on the market. Trayer is a pioneer in vacuum breaker technology and continues to lead the industry with designs that meet the demands for highly reliable electrical grids. Trayer gear is unsurpassed for reliability, safety, and ease-of-operation. That's why Trayer switchgear is specified by utilities around the globe. By combining leading edge engineering, high quality manufacturing and an industry leading commitment to customer service, you can depend on Trayer Switchgear to perform.

Trayer Engineering Corporation 898 Pennsylvania Avenue San Francisco, California 94107 USA

800-377-1774 sales@trayer.com

www.trayer.com

